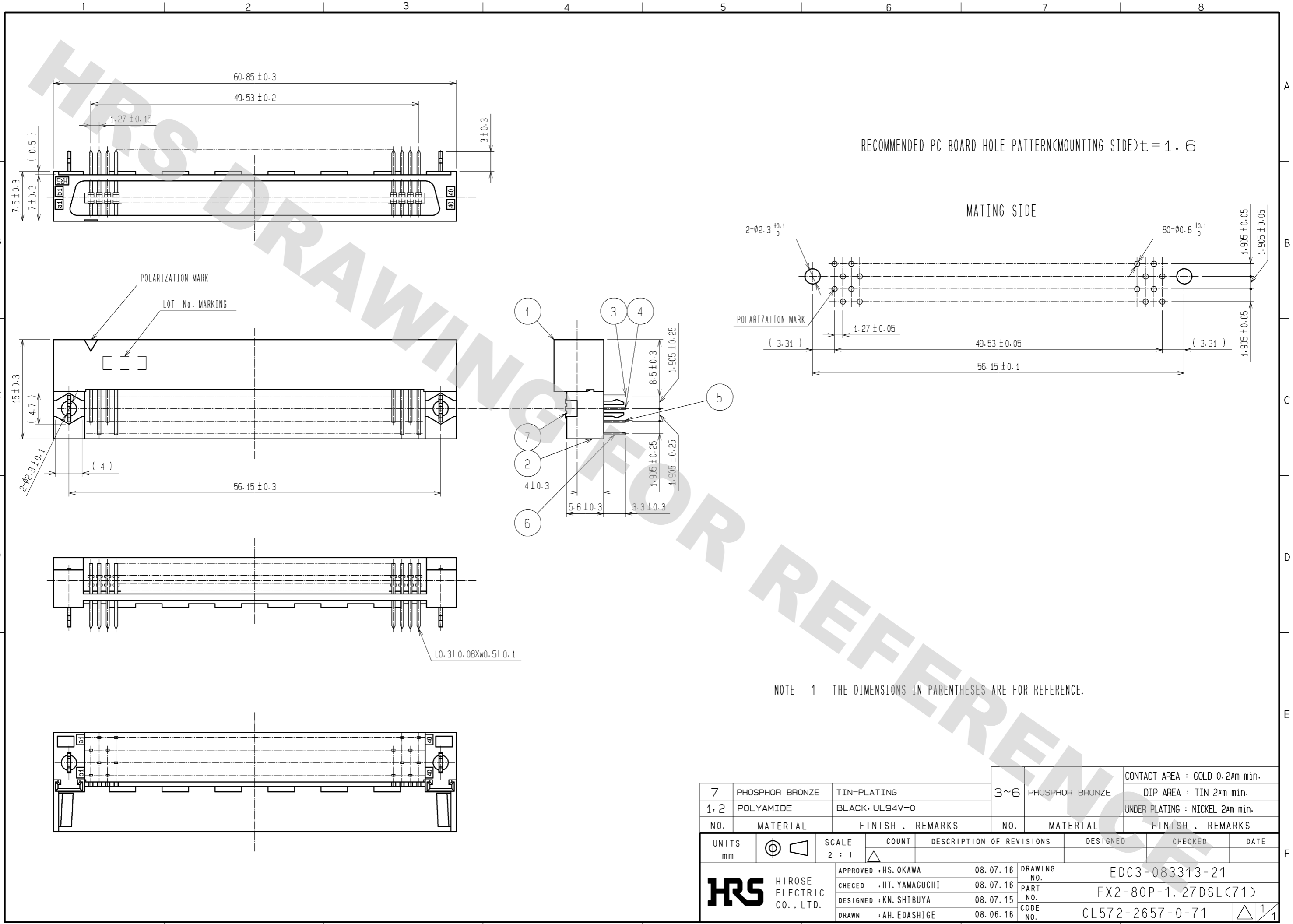


DRAWING FOR REFERENCE: This is subject to change without notice
08/11/2012



7	PHOSPHOR BRONZE	TIN-PLATING	3~6	PHOSPHOR BRONZE	CONTACT AREA : GOLD 0.2µm min. DIP AREA : TIN 2µm min.
1,2	POLYAMIDE	BLACK·UL94V-0			UNDER PLATING : NICKEL 2µm min.
NO.	MATERIAL	FINISH . REMARKS	NO.	MATERIAL	FINISH . REMARKS
UNITS	mm	SCALE	2 : 1	COUNT	△
DESCRIPTION OF REVISIONS		DESIGNED	CHECKED	DATE	
APPROVED : HS. OKAWA		08.07.16	DRAWING NO. EDC3-083313-21		
CHECKED : HT. YAMAGUCHI		08.07.16	PART NO. FX2-80P-1.27DSL(71)		
DESIGNED : KN. SHIBUYA		08.07.15	CODE NO. CL572-2657-0-71		
DRAWN : AH. EDASHIGE		08.06.16	△ 1/1		