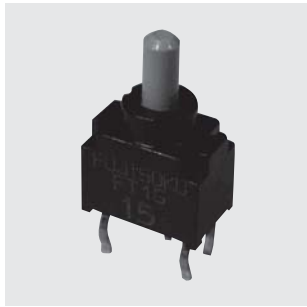


# FT

- Terminal Pins : Kinked
- Actuator Color : Yellow

Washable



## Ultra-Miniature Toggle Switch

RoHS Compliant

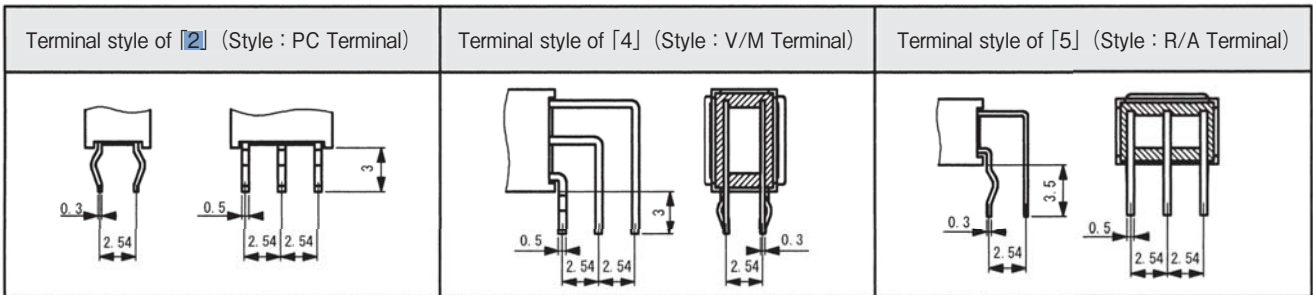
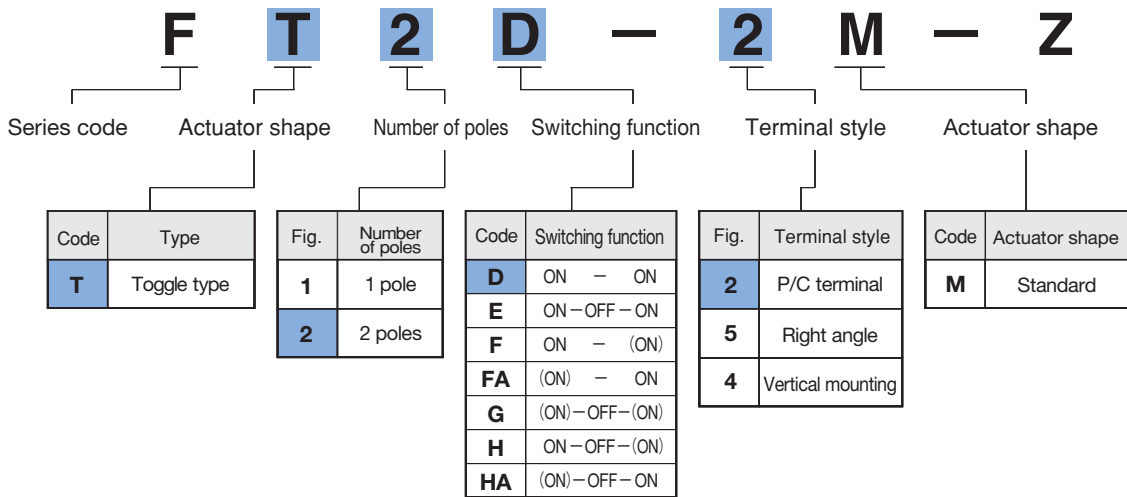
### Features

- Ultra-miniature toggle switch for high density mounting.
- Washable.
- Terminal pin pitch : 2.54 mm.
- Independent detent mechanism ensures light operational feel.
- Clip contact mechanism for long-term contact reliability.
- Gold-plated contacts.

### Specifications

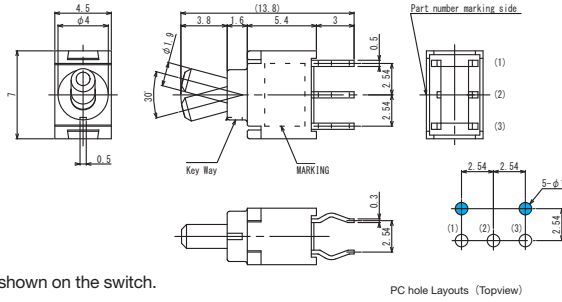
|                             |  |                  |
|-----------------------------|--|------------------|
| Rating                      | Max.   | 28VDC 0.4VA max. |
|                             | Min.   | 1μ A 20mVDC      |
| Initial contact resistance  | 100mΩ max. (1.5mA 200μ VAC)  |                  |
| Dielectric strength         | 250VAC 1 minute  |                  |
| Insulation resistance       | 500MΩ min. (250VDC)  |                  |
| Electrical life             | 10,000 cycles at max. rating<br>50,000 cycles at min. rating (D,E type)<br>30,000 cycles at min. rating (F,G,H type) |                  |
| Operating temperature range | -40°C~+85°C  |                  |
| Storage temperature range   | -40°C~+85°C  |                  |

### Part Numbering



(ON) : Momentary.

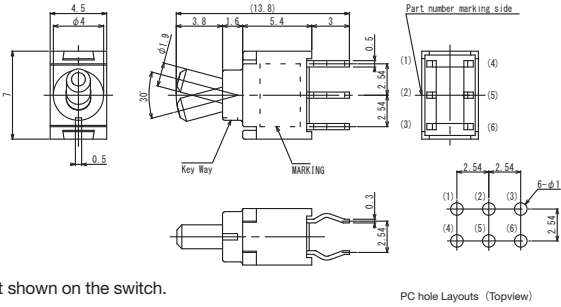
**SPDT**  
**PC**



Terminal numbers are not shown on the switch.

| Switching function   |      |     |      |
|----------------------|------|-----|------|
| Part No.             |      |     |      |
| <b>FT1D-2M-Z</b>     | ON   | —   | ON   |
| ☆ <b>FT1E-2M-Z</b>   | ON   | OFF | ON   |
| ☆ <b>FT1F-2M-Z</b>   | ON   | —   | (ON) |
| ★ <b>FT1G-2M-Z</b>   | (ON) | OFF | (ON) |
| ▲ <b>FT1H-2M-Z</b>   | ON   | OFF | (ON) |
| Connecting terminals | 2-3  | —   | 2-1  |

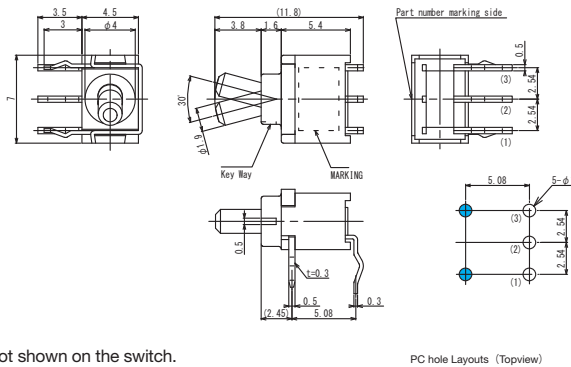
**DPDT**  
**PC**



Terminal numbers are not shown on the switch.

| Switching function   |            |     |            |
|----------------------|------------|-----|------------|
| Part No.             |            |     |            |
| <b>FT2D-2M-Z</b>     | ON         | —   | ON         |
| ☆ <b>FT2E-2M-Z</b>   | ON         | OFF | ON         |
| ★ <b>FT2F-2M-Z</b>   | ON         | —   | (ON)       |
| ★ <b>FT2G-2M-Z</b>   | (ON)       | OFF | (ON)       |
| ★ <b>FT2H-2M-Z</b>   | ON         | OFF | (ON)       |
| Connecting terminals | 2-3<br>5-6 | —   | 2-1<br>5-4 |

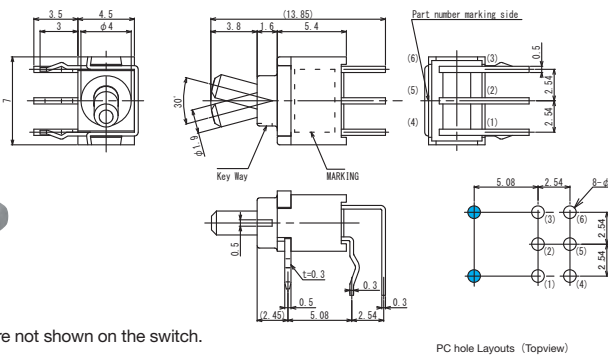
**SPDT**  
**R/A**



Terminal numbers are not shown on the switch.

| Switching function   |      |     |      |
|----------------------|------|-----|------|
| Part No.             |      |     |      |
| <b>FT1D-5M-Z</b>     | ON   | —   | ON   |
| <b>FT1E-5M-Z</b>     | ON   | OFF | ON   |
| ☆ <b>FT1F-5M-Z</b>   | (ON) | —   | ON   |
| ★ <b>FT1FA-5M-Z</b>  | ON   | —   | (ON) |
| ☆ <b>FT1G-5M-Z</b>   | (ON) | OFF | (ON) |
| ★ <b>FT1H-5M-Z</b>   | (ON) | OFF | ON   |
| ▲ <b>FT1HA-5M-Z</b>  | ON   | OFF | (ON) |
| Connecting terminals | 2-1  | —   | 2-3  |

**DPDT**  
**R/A**

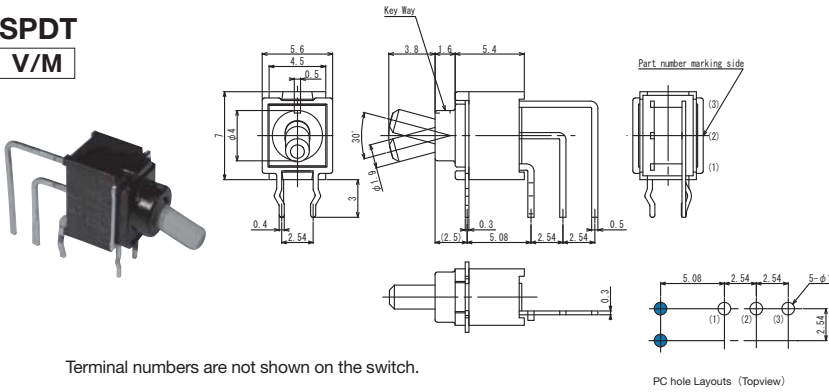


Terminal numbers are not shown on the switch.

| Switching function   |            |     |            |
|----------------------|------------|-----|------------|
| Part No.             |            |     |            |
| ☆ <b>FT2D-5M-Z</b>   | ON         | —   | ON         |
| ★ <b>FT2E-5M-Z</b>   | ON         | OFF | ON         |
| ★ <b>FT2F-5M-Z</b>   | (ON)       | —   | ON         |
| ▲ <b>FT2FA-5M-Z</b>  | ON         | —   | (ON)       |
| ▲ <b>FT2G-5M-Z</b>   | (ON)       | OFF | (ON)       |
| ▲ <b>FT2H-5M-Z</b>   | (ON)       | OFF | ON         |
| ▲ <b>FT2HA-5M-Z</b>  | ON         | OFF | (ON)       |
| Connecting terminals | 2-1<br>5-4 | —   | 2-3<br>5-6 |

# FT

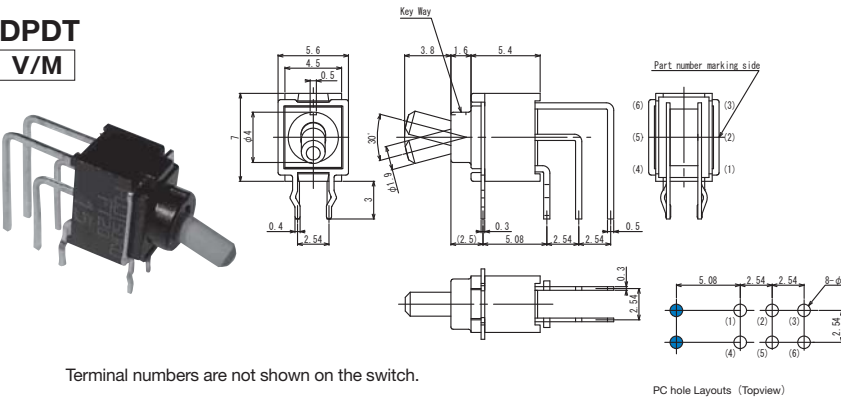
## SPDT V/M



Terminal numbers are not shown on the switch.

| Switching function   |      |     |      |
|----------------------|------|-----|------|
| Part No.             |      |     |      |
| ☆FT1D-4M-Z           | ON   | —   | ON   |
| ★FT1E-4M-Z           | ON   | OFF | ON   |
| ★FT1F-4M-Z           | ON   | —   | (ON) |
| ▲FT1FA-4M-Z          | (ON) | —   | ON   |
| ▲FT1G-4M-Z           | (ON) | OFF | (ON) |
| ▲FT1H-4M-Z           | ON   | OFF | (ON) |
| ▲FT1HA-4M-Z          | (ON) | OFF | ON   |
| Connecting terminals | 2—3  | —   | 2—1  |

## DPDT V/M



Terminal numbers are not shown on the switch.

| Switching function   |            |     |            |
|----------------------|------------|-----|------------|
| Part No.             |            |     |            |
| FT2D-4M-Z            | ON         | —   | ON         |
| ★FT2E-4M-Z           | ON         | OFF | ON         |
| ★FT2F-4M-Z           | ON         | —   | (ON)       |
| ▲FT2FA-4M-Z          | (ON)       | —   | ON         |
| ▲FT2G-4M-Z           | (ON)       | OFF | (ON)       |
| ▲FT2H-4M-Z           | ON         | OFF | (ON)       |
| ▲FT2HA-4M-Z          | (ON)       | OFF | ON         |
| Connecting terminals | 2—3<br>5—6 | —   | 2—1<br>5—4 |

### ■ Soldering Specifications

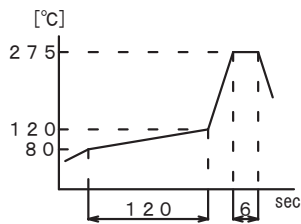
#### (1) Manual Soldering

Device : Soldering iron  
380°C, Max.; 3 seconds, Max.

#### (2) Auto Soldering

Device : Jet wave type or dip type  
275°C, Max.; 6 seconds, Max.

- Pre-heating should be done at temperatures from 80 to 120°C and within 120 sec.



- (3) When soldering two or more terminals to a common land, use solder resist to separate them.

### ■ Flux Cleaning

- (1) Solvent : Fluorine or Alcohol type.
- (2) Cleaning after soldering should be done after the PC board is exposed to room temperature (30°C or below) for 1 to 2 hours.
- (3) Do not use ultrasonic cleaning.

### ■ Packaging Specifications

