

# Customer Information Sheet

DRAWING No.: M80-459XX98

SHT 2 OF 2

IF IN DOUBT - ASK

©

NOT TO SCALE

THIRD ANGLE PROJECTION

ALL DIMENSIONS IN mm

## SPECIFICATION:

**MATERIAL:**  
 HOUSING = GLASS-FILLED POLYAMIDE 46,  
 UL94V-0, BLACK  
 IOILOK SCREW, COLLAR = STAINLESS STEEL  
 SPRING = MUSIC WIRE

**FINISH:**  
 SPRING = TIN COATED

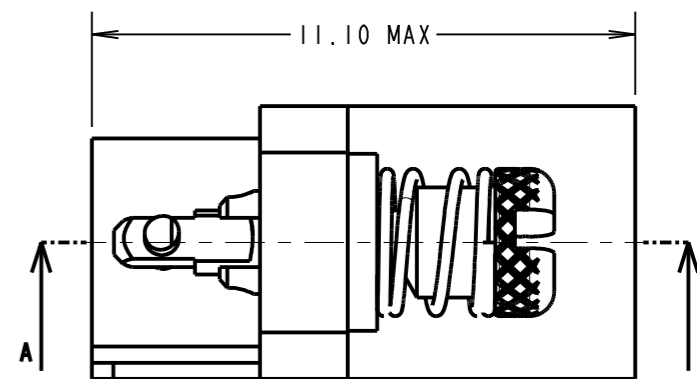
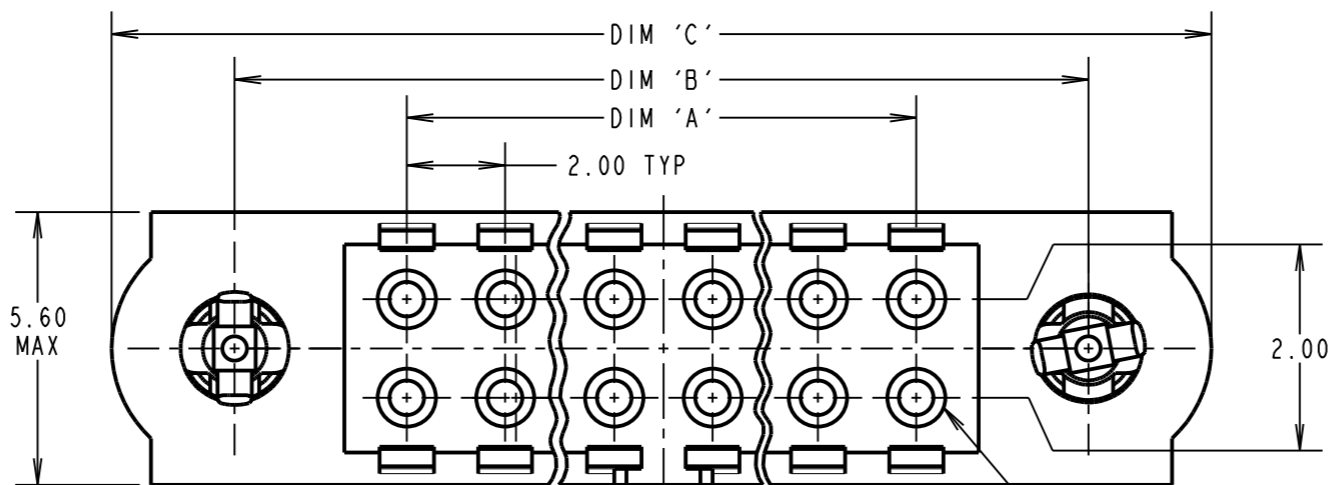
**ELECTRICAL:**  
 CURRENT RATING AT 25°C = 3.0A MAX  
 CURRENT RATING AT 85°C = 2.2A MAX  
 WORKING VOLTAGE = 800V AC/DC  
 VOLTAGE PROOF = 1200V AC/DC  
 CONTACT RESISTANCE = 25 mΩ MAX  
 INSULATION RESISTANCE = 100 MΩ MIN

**MECHANICAL:**  
 DURABILITY = 400 OPERATIONS  
 INSERTION FORCE = 2.8N MAX  
 WITHDRAWAL FORCE = 0.2N MIN

**ENVIRONMENTAL:**  
 TEMPERATURE RANGE = -55°C TO +125°C

**PACKING:**  
 BAG

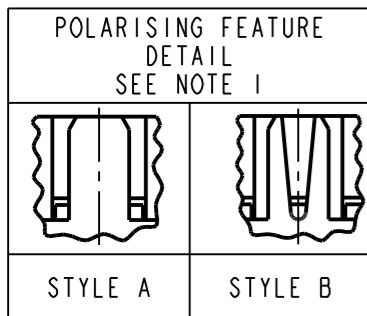
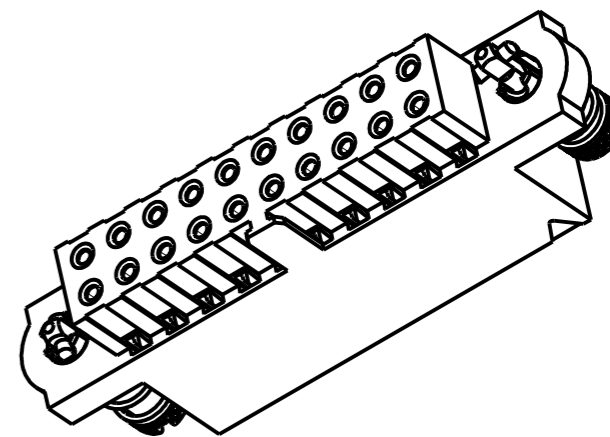
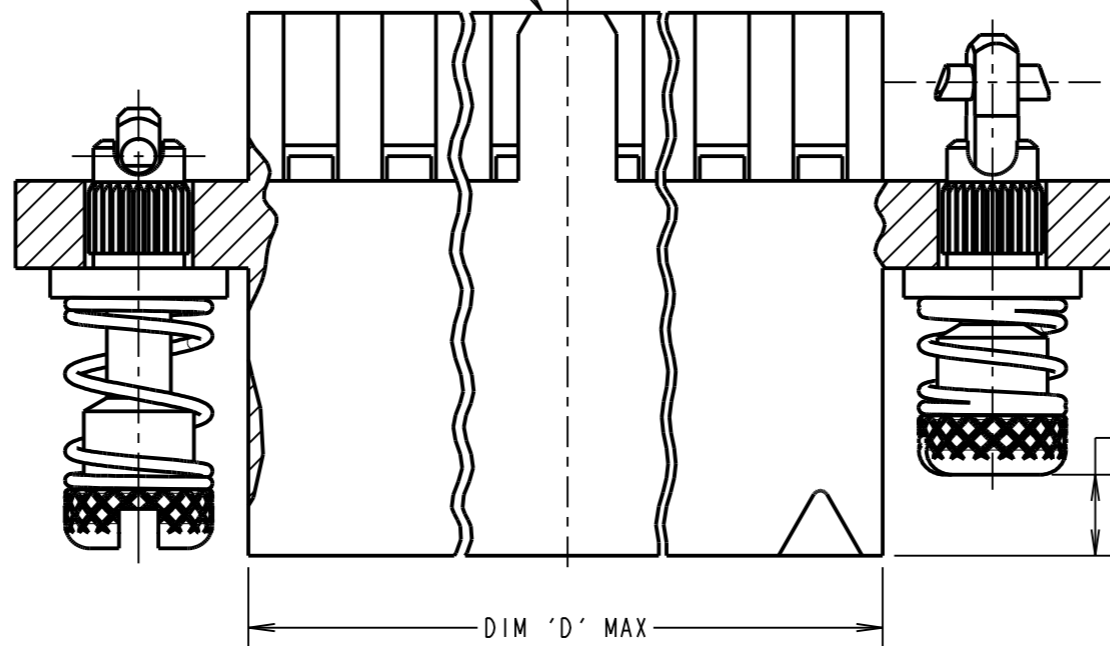
FOR COMPLETE SPECIFICATION,  
 SEE COMPONENT SPECIFICATION  
 C040XX (LATEST ISSUE)



- NOTES:**
- POLARISING FEATURE STYLE DEPENDANT ON NUMBER OF CONTACT POSITIONS.
  - HOUSING TO BE USED WITH DATAMATE TRIO-TEK CRIMP CONTACTS:  
 M80-25300XX = 24-22 AWG REELED  
 M80-25400XX = 28-26 AWG REELED  
 M80-28300XX = 24-22 AWG LOOSE  
 M80-28400XX = 28-26 AWG LOOSE
  - THE SPECIFICATION APPLIES WHEN HOUSING IS USED WITH THE ABOVE CONTACTS.
  - CONTACT EXTRACTION TOOL = Z80-258.
  - INSTRUCTION SHEETS ARE AVAILABLE.
  - SPRING LOAD WHEN SOLID = 2.64N.  
 SPRING RATE = 1.32N/mm.
  - LENGTH WILL BE 1.7mm WHEN IOI-SCREWS ARE ENGAGED WITH RETAINERS IN MATING CONNECTOR.

POLARISING FEATURE  
 SEE DETAIL

PART SECTION A-A



ORDER CODE:  
**M80-459XX98**

TOTAL No. OF  
 CONTACT POSITIONS  
 04, 06, 08, 10, 12, 14, 20,  
 26, 28, 34, 42, 50

PLEASE CONTACT  
 datamate@harwin.com  
 FOR CURRENT AVAILABILITY

MSP	4	07.01.16	13139
NAME	ISS.	DATE	C/NOTE
APPROVED: M.PERREN			
CHECKED: M.PLESTED			
DRAWN: S.FLOWER			
CUSTOMER REF.:			
ASSEMBLY DRG:			

DIMENSION	CALCULATION
DIM 'A'	TOTAL No. OF CONTACT POSITIONS - 2
DIM 'B'	TOTAL No. OF CONTACT POSITIONS + 5
DIM 'C'	TOTAL No. OF CONTACT POSITIONS + 10
DIM 'D'	TOTAL No. OF CONTACT POSITIONS + 0.59
EXAMPLE: CONNECTOR WITH 20 CONTACT POSITIONS, M80-4592098	
DIM 'A' = 18.00mm, DIM 'B' = 25.00mm, DIM 'C' = 30.00mm	

**HARWIN**

www.harwin.com  
 technical@harwin.com

THIS DRAWING AND ANY  
 INFORMATION OR DESCRIPTIVE  
 MATTER SET OUT HEREON ARE  
 CONFIDENTIAL AND COPYRIGHT  
 PROPERTY OF THE HARWIN  
 GROUP AND MUST NOT BE  
 DISCLOSED, LOANED, COPIED  
 OR USED FOR MANUFACTURING,  
 TENDERING OR FOR ANY  
 OTHER PURPOSE WITHOUT  
 THEIR WRITTEN PERMISSION.

**TOLERANCES**  
 X. = ±1mm  
 X.X = ±0.50mm  
 X.XX = ±0.10mm  
 X.XXX = ±0.01mm  
**ANGLES = ±5°**  
 UNLESS STATED

**MATERIAL:**  
 SEE ABOVE

**FINISH:**

**S/AREA:** mm<sup>2</sup>

**TITLE:** DATAMATE TRIO-TEK  
 FEMALE CRIMP HOUSING  
 WITH IOILOK JACKSCREWS

**DRAWING NUMBER:**  
**M80-459XX98**

SHT  
 2 OF 2