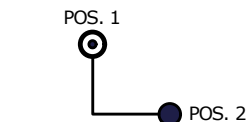


NOTES:

1. ALL DIMENSIONS IN MM [INCH]
2. GENERAL TOLERANCE: X.X = ±0.4
X.XX = ±0.25
3. TERM. NOS. FOR REF. ONLY
4. CONTACT RATING: 4A @125VAC/28VDC, 2A @250VAC
5. DIELECTRI STRENGTH: 1KV RMS min. AT SEA LEVEL
6. ELECTRICAL LIFE: 10,000 MAKE-AND-BREAK CYCLES AT FULL LOAD.
7. KEYCODE: A126

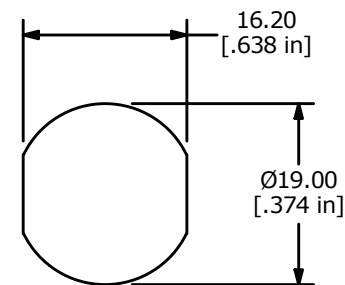


CIRCUIT: DP (90° INDEXING)
CONTACT CONFIGURATION

SWITCH FUNCTION	
CONNECTED TERMINAL #	
POS.1	POS.2
8-1, 4-5	1-3, 5-7

LEGEND

- = DETENT POSITIONS
- ⊙ = KEY PULL POSSIBLE IN THESE POSITIONS



RECOMENDED PANEL CUTOUT



C	21924	UPDATED AND REDRAWN IN INVENTOR	7/22/15	MW
B	11401	REVISED SCHEMATIC	7/5/01	CJB
REV	PCR NO	DESCRIPTION	DATE	BY

TITLE K01300A126				
SCALE 1:1	DATE 7/21/2015	DR AS	DWG K200224	REV C

THE INFORMATION CONTAINED IN THIS DOCUMENT IS PROPRIETARY TO E-SWITCH AND IS NOT TO BE COPIED OR TRANSFERRED