

# TLC1541 10-BIT ANALOG-TO-DIGITAL CONVERTER WITH SERIAL CONTROL AND 11 INPUTS

SLAS073C – DECEMBER 1995 – REVISED AUGUST 1996

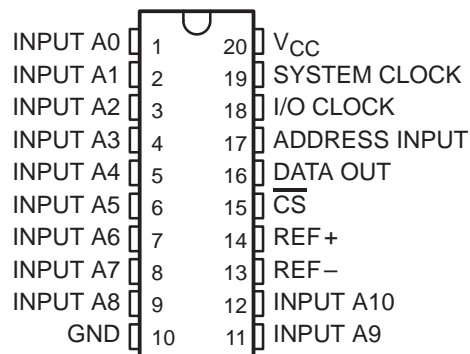
- 10-Bit Resolution A/D Converter
- Microprocessor Peripheral or Standalone Operation
- On-Chip 12-Channel Analog Multiplexer
- Built-In Self-Test Mode
- Software-Controllable Sample-and-Hold Function
- Total Unadjusted Error . . .  $\pm 1$  LSB Max
- Pinout and Control Signals Compatible With TLC540 and TLC549 Families of 8-Bit A/D Converters
- CMOS Technology

| PARAMETER                       | VALUE            |
|---------------------------------|------------------|
| Channel Acquisition Sample Time | 5.5 $\mu$ s      |
| Conversion Time (Max)           | 21 $\mu$ s       |
| Samples Per Second (Max)        | $32 \times 10^3$ |
| Power Dissipation (Max)         | 6 mW             |

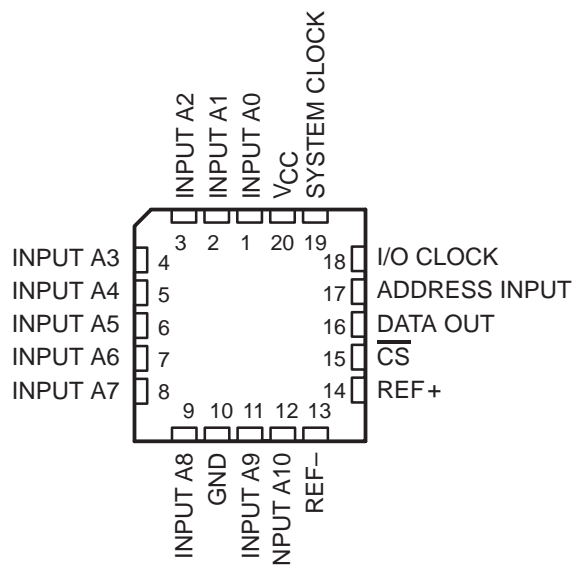
## description

The TLC1541 is a CMOS A/D converter built around a 10-bit switched-capacitor successive-approximation A/D converter. The device is designed for serial interface to a microprocessor or peripheral using a 3-state output with up to four control inputs (including independent SYSTEM CLOCK, I/O CLOCK, chip select  $\overline{CS}$ , and ADDRESS INPUT). A 2.1-MHz system clock for the TLC1541, with a design that includes simultaneous read/write operation, allows high-speed data transfers and sample rates up to 32 258 samples per second. In addition to the high-speed converter and versatile control logic, there is an on-chip, 12-channel analog multiplexer that can be used to sample any one of 11 inputs or an internal self-test voltage and a sample-and-hold function that operates automatically.

DW OR N PACKAGE  
(TOP VIEW)



FN PACKAGE  
(TOP VIEW)



## AVAILABLE OPTIONS

| T <sub>A</sub> | PACKAGE            |                           |                 |
|----------------|--------------------|---------------------------|-----------------|
|                | SMALL OUTLINE (DW) | PLASTIC CHIP CARRIER (FN) | PLASTIC DIP (N) |
| 0°C to 70°C    | TLC1541CDW         | TLC1541CFN                | TLC1541CN       |
| -40°C to 85°C  | TLC1541IDW         | TLC1541IFN                | TLC1541IN       |



Please be aware that an important notice concerning availability, standard warranty, and use in critical applications of Texas Instruments semiconductor products and disclaimers thereto appears at the end of this data sheet.

PRODUCTION DATA information is current as of publication date. Products conform to specifications per the terms of Texas Instruments standard warranty. Production processing does not necessarily include testing of all parameters.

**TEXAS  
INSTRUMENTS**

POST OFFICE BOX 655303 • DALLAS, TEXAS 75265

Copyright © 1996, Texas Instruments Incorporated

# TLC1541 10-BIT ANALOG-TO-DIGITAL CONVERTER WITH SERIAL CONTROL AND 11 INPUTS

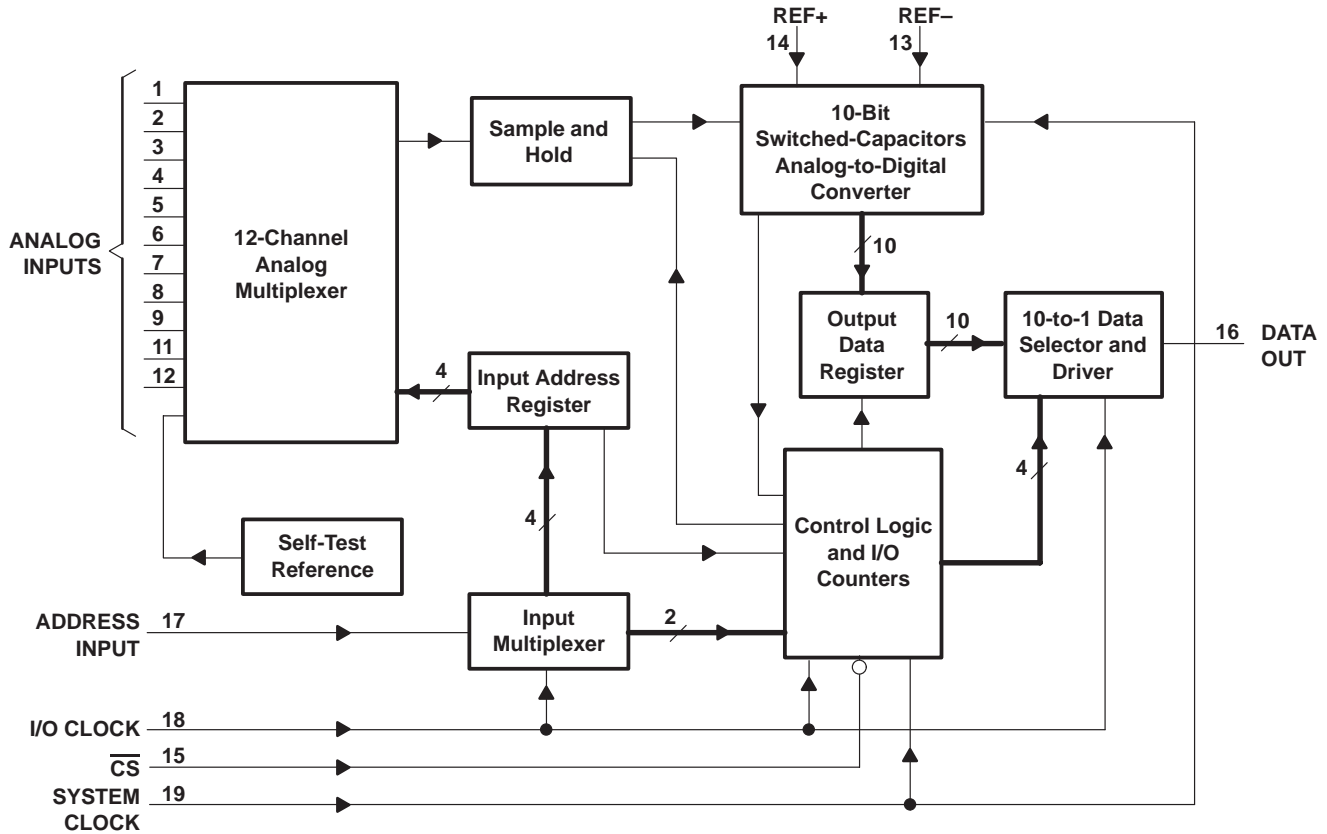
SLAS073C – DECEMBER 1995 – REVISED AUGUST 1996

## description (continued)

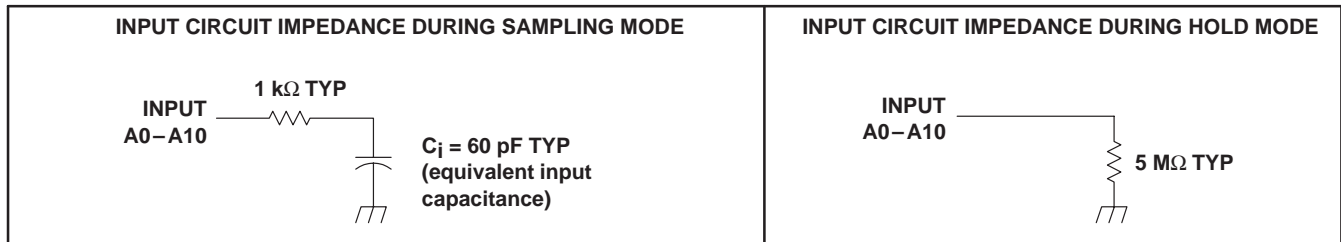
The converters incorporated in the TLC1541 feature differential high-impedance reference inputs that facilitate ratiometric conversion, scaling, and analog circuitry isolation from logic and supply noises. A totally switched-capacitor design allows low-error conversion in 21  $\mu\text{s}$  over the full operating temperature range.

The TLC1541 is available in DW, FN, and N packages. The C-suffix versions are characterized for operation from 0°C to 70°C. The I-suffix versions are characterized for operation from -40°C to 85°C.

## functional block diagram



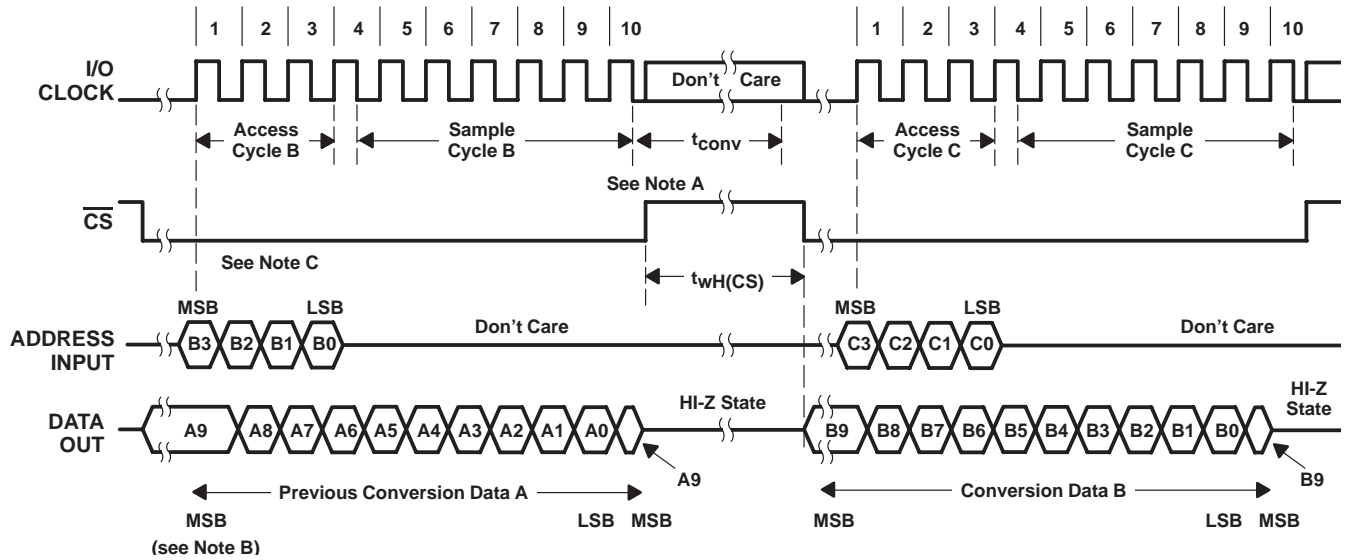
## typical equivalent inputs



# TLC1541 10-BIT ANALOG-TO-DIGITAL CONVERTER WITH SERIAL CONTROL AND 11 INPUTS

SLAS073C – DECEMBER 1995 – REVISED AUGUST 1996

## operating sequence



- NOTES: A. The conversion cycle, which requires 44 system clock periods, initiates on the tenth falling edge of the I/O clock after  $\overline{CS}$  goes low for the channel whose address exists in memory at that time. When  $\overline{CS}$  is kept low during conversion, the I/O clock must remain low for at least 44 system clock cycles to allow the conversion to complete.
- B. The most significant bit (MSB) is automatically placed on the DATA OUT bus after  $\overline{CS}$  is brought low. The remaining nine bits (A8–A0) clock out on the first nine I/O clock falling edges.
- C. To minimize errors caused by noise at the  $\overline{CS}$  input, the internal circuitry waits for three system clock cycles (or less) after a chip-select falling edge is detected before responding to control input signals. Therefore, no attempt should be made to clock-in address data until the minimum chip-select setup time elapses.

## absolute maximum ratings over operating free-air temperature range (unless otherwise noted)<sup>†</sup>

|   |                            |
|---|----------------------------|
| Supply voltage, $V_{CC}$ (see Note 1)   | 6.5 V                      |
| Input voltage range, $V_I$ (any input)  | –0.3 V to $V_{CC} + 0.3$ V |
| Output voltage range, $V_O$   | –0.3 V to $V_{CC} + 0.3$ V |
| Peak input current (any input)  | ±10 mA                     |
| Peak total input current (all inputs)   | ±30 mA                     |
| Operating free-air temperature range, $T_A$ : C suffix                            | 0°C to 70°C                |
| I suffix  | –40°C to 85°C              |
| Storage temperature range, $T_{stg}$  | –65°C to 150°C             |
| Case temperature for 10 seconds, $T_C$ : FN package                               | 260°C                      |
| Lead temperature 1,6 mm (1/16 inch) from the case for 10 seconds: DW or N package | 260°C                      |

<sup>†</sup> Stresses beyond those listed under “absolute maximum ratings” may cause permanent damage to the device. These are stress ratings only, and functional operation of the device at these or any other conditions beyond those indicated under “recommended operating conditions” is not implied. Exposure to absolute-maximum-rated conditions for extended periods may affect device reliability.

NOTE 1: All voltage values are with respect to digital ground with REF– and GND wired together (unless otherwise noted).

# TLC1541

## 10-BIT ANALOG-TO-DIGITAL CONVERTER

### WITH SERIAL CONTROL AND 11 INPUTS

SLAS073C – DECEMBER 1995 – REVISED AUGUST 1996

#### recommended operating conditions

|   | MIN              | NOM                            | MAX          | UNIT                |
|---|------------------|--------------------------------|--------------|---------------------|
| Supply voltage, $V_{CC}$  | 4.75             | 5                              | 5.5          | V                   |
| Positive reference voltage, $V_{ref+}$ (see Note 2)   | 2.5              | $V_{CC}$                       | $V_{CC}+0.1$ | V                   |
| Negative reference voltage, $V_{ref-}$ (see Note 2)   | -0.1             | 0                              | 2.5          | V                   |
| Differential reference voltage, $V_{ref+} - V_{ref-}$ (see Note 2)  | 1                | $V_{CC}$                       | $V_{CC}+0.2$ | V                   |
| Analog input voltage (see Note 2)   | 0                |                                | $V_{CC}$     | V                   |
| High-level control input voltage, $V_{IH}$  | 2                |                                |              | V                   |
| Low-level control input voltage, $V_{IL}$   |                  |                                | 0.8          | V                   |
| Input/output clock frequency, $f_{clock(I/O)}$  | 0                |                                | 1.1          | MHz                 |
| System clock frequency, $f_{clock(SYS)}$  | $f_{clock(I/O)}$ |                                | 2.1          | MHz                 |
| Setup time, address bits before I/O CLOCK $\uparrow$ , $t_{su(A)}$  | 400              |                                |              | ns                  |
| Hold time, address bits after I/O CLOCK $\uparrow$ , $t_h(A)$   | 0                |                                |              | ns                  |
| Setup time, $\overline{CS}$ low before clocking in first address bit, $t_{su(CS)}$<br>(see Note 3 and Operating Sequence) | 3                |                                |              | System clock cycles |
| Pulse duration, $\overline{CS}$ high during conversion, $t_{wH(CS)}$ (see Operating Sequence)                             | 44               |                                |              | System clock cycles |
| Pulse duration, SYSTEM CLOCK high, $t_{wH(SYS)}$  | 210              |                                |              | ns                  |
| Pulse duration, SYSTEM CLOCK low, $t_{wL(SYS)}$   | 190              |                                |              | ns                  |
| Pulse duration, I/O CLOCK high, $t_{wH(I/O)}$   | 404              |                                |              | ns                  |
| Pulse duration, I/O CLOCK low, $t_{wL(I/O)}$  | 404              |                                |              | ns                  |
| Clock transition time (see Note 4)  | System           | $f_{clock(SYS)} \leq 1048$ kHz | 30           | ns                  |
|   |                  | $f_{clock(SYS)} > 1048$ kHz    | 20           |                     |
|   | I/O              | $f_{clock(I/O)} \leq 525$ kHz  | 100          | ns                  |
|   |                  | $f_{clock(I/O)} > 525$ kHz     | 40           |                     |
| Operating free-air temperature, $T_A$   | C suffix         | 0                              | 70           | °C                  |
|   | I suffix         | -40                            | 85           |                     |

- NOTES: 2. Analog input voltages greater than that applied to REF + convert as all ones (1111111111), while input voltages less than that applied to REF - convert as all zeros (0000000000). For proper operation, REF + voltage must be at least 1 V higher than REF - voltage. Also, the total unadjusted error may increase as this differential reference voltage falls below 4.75 V.
3. To minimize errors caused by noise at the chip select input, the internal circuitry waits for three system clock cycles (or less) after a chip select falling edge is detected before responding to control input signals. Therefore, no attempt should be made to clock in an address until the minimum chip select setup time elapses.
4. The amount of time required for the clock input signal to fall from  $V_{IH}$  min to  $V_{IL}$  max or to rise from  $V_{IL}$  max to  $V_{IH}$  min. In the vicinity of normal room temperature, the devices function with input clock transition time as slow as 2  $\mu$ s for remote data acquisition applications where the sensor and the A/D converter are placed several feet away from the controlling microprocessor.

TLC1541  
**10-BIT ANALOG-TO-DIGITAL CONVERTER  
 WITH SERIAL CONTROL AND 11 INPUTS**

SLAS073C – DECEMBER 1995 – REVISED AUGUST 1996

**electrical characteristics over recommended operating temperature range,  
 $V_{CC} = V_{ref+} = 4.75\text{ V to }5.5\text{ V}$ ,  $f_{clock(I/O)} = 1.1\text{ MHz}$ ,  $f_{clock(SYS)} = 2.1\text{ MHz}$  (unless otherwise noted)**

| PARAMETER                        |   | TEST CONDITIONS  | MIN | TYP†   | MAX  | UNIT          |
|----------------------------------|---|--|-----|--------|------|---------------|
| $V_{OH}$                         | High-level output voltage (terminal 16) | $V_{CC} = 4.75\text{ V}$ , $I_{OH} = 360\text{ }\mu\text{A}$ | 2.4 |        |      | V             |
| $V_{OL}$                         | Low-level output voltage                | $V_{CC} = 4.75\text{ V}$ , $I_{OL} = 3.2\text{ mA}$          |     |        | 0.4  | V             |
| $I_{OZ}$                         | High-impedance-state output current     | $V_O = V_{CC}$ , $\overline{CS}$ at $V_{CC}$                 |     |        | 10   | $\mu\text{A}$ |
|                                  |   | $V_O = 0$ , $\overline{CS}$ at $V_{CC}$                      |     |        | -10  |               |
| $I_{IH}$                         | High-level input current                | $V_I = V_{CC}$   |     | 0.005  | 2.5  | $\mu\text{A}$ |
| $I_{IL}$                         | Low-level input current                 | $V_I = 0$  |     | -0.005 | -2.5 | $\mu\text{A}$ |
| $I_{CC}$                         | Operating supply current                | $\overline{CS}$ at 0 V                                       |     | 1.2    | 2.5  | mA            |
| Selected channel leakage current |   | Selected channel at $V_{CC}$ ,<br>Unselected channel at 0 V  |     | 0.4    | 1    | $\mu\text{A}$ |
|                                  |   | Selected channel at 0 V,<br>Unselected channel at $V_{CC}$   |     | -0.4   | -1   |               |
| $I_{CC} + I_{ref}$               | Supply and reference current            | $V_{ref+} = V_{CC}$ , $\overline{CS}$ at 0 V                 |     | 1.3    | 3    | mA            |
| $C_i$                            | Input capacitance                       | Analog inputs  |     | 7      | 55   | pF            |
|                                  |   | Control inputs   |     | 5      | 15   |               |

† All typical values are at  $V_{CC} = 5\text{ V}$  and  $T_A = 25^\circ\text{C}$ .

**TLC1541**  
**10-BIT ANALOG-TO-DIGITAL CONVERTER**  
**WITH SERIAL CONTROL AND 11 INPUTS**

SLAS073C – DECEMBER 1995 – REVISED AUGUST 1996

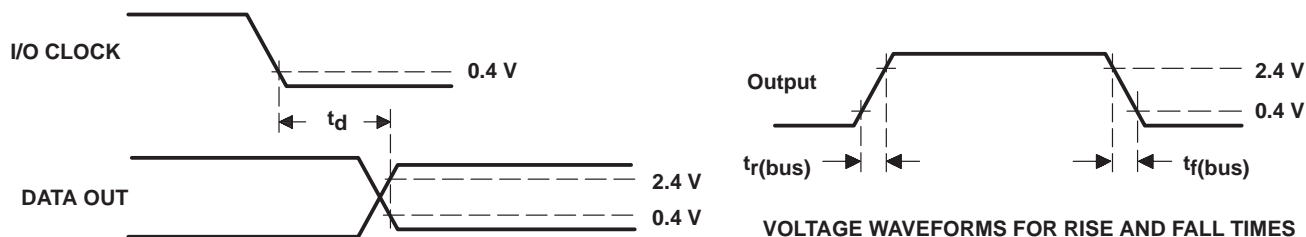
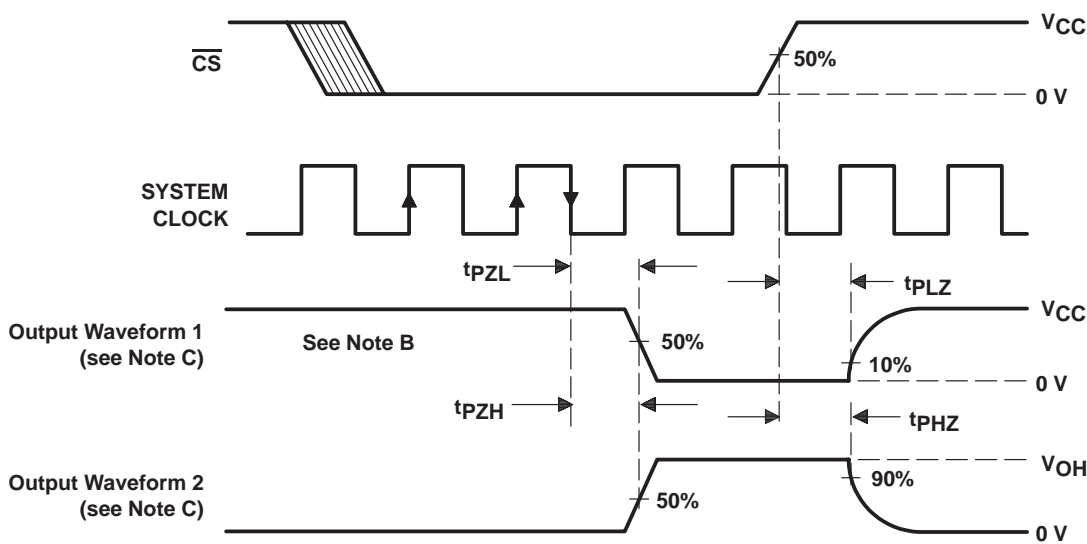
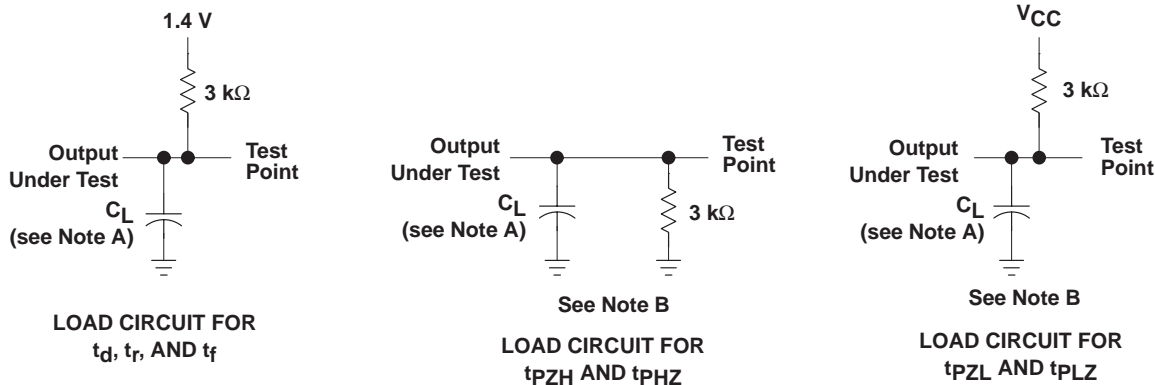
**operating characteristics over recommended operating temperature range,**  
 **$V_{CC} = V_{ref+} = 4.75\text{ V to }5.5\text{ V}$ ,  $f_{clock(I/O)} = 1.1\text{ MHz}$ ,  $f_{clock(SYS)} = 2.1\text{ MHz}$**

| PARAMETER    |  | TEST CONDITIONS                       | MIN                 | MAX                 | UNIT                   |
|--------------|--|---------------------------------------|---------------------|---------------------|------------------------|
| $E_L$        | Linearity error  | See Note 5                            |                     | $\pm 1$             | LSB                    |
| $E_{ZS}$     | Zero-scale error   | See Notes 2 and 6                     |                     | $\pm 1$             | LSB                    |
| $E_{FS}$     | Full-scale error   | See Notes 2 and 6                     |                     | $\pm 1$             | LSB                    |
| $E_T$        | Total unadjusted error   | See Note 7                            |                     | $\pm 1$             | LSB                    |
|              | Self-test output code  | Input A11 address = 1011 (see Note 8) | 0111110100<br>(500) | 1000001100<br>(524) |                        |
| $t_{conv}$   | Conversion time  |                                       |                     | 21                  | $\mu\text{s}$          |
|              | Total access and conversion time                               |                                       |                     | 31                  | $\mu\text{s}$          |
|              | Channel acquisition time (sample cycle)                        | See Operating Sequence                |                     | 6                   | I/O<br>clock<br>cycles |
| $t_v$        | Time output data remains valid after I/O<br>CLOCK $\downarrow$ |                                       | 10                  |                     | ns                     |
| $t_d$        | Delay time, I/O CLOCK $\downarrow$ to DATA OUT valid           |                                       |                     | 400                 | ns                     |
| $t_{en}$     | Output enable time   | See Figure 1                          |                     | 150                 | ns                     |
| $t_{dis}$    | Output disable time  |                                       |                     | 150                 | ns                     |
| $t_{r(bus)}$ | Data bus rise time   |                                       |                     | 300                 | ns                     |
| $t_{f(bus)}$ | Data bus fall time   |                                       |                     | 300                 | ns                     |

- NOTES: 2. Analog input voltages greater than that applied to REF + convert as all ones (1111111111), while input voltages less than that applied to REF – convert as all zeros (0000000000). For proper operation, REF + voltage must be at least 1 V higher than REF – voltage. Also, the total unadjusted error may increase as this differential reference voltage falls below 4.75 V.
5. Linearity error is the maximum deviation from the best straight line through the A/D transfer characteristics.
6. Zero-scale error is the difference between 0000000000 and the converted output for zero input voltage; full-scale error is the difference between 1111111111 and the converted output for full-scale input voltage.
7. Total unadjusted error includes linearity, zero-scale, and full-scale errors.
8. Both the input address and the output codes are expressed in positive logic. The A11 analog input signal is internally generated and used for test purposes.



PARAMETER MEASUREMENT INFORMATION



- NOTES: A.  $C_L = 50 \text{ pF}$   
 B.  $t_{en} = t_{pZH}$  or  $t_{pZL}$  and  $t_{dis} = t_{pHZ}$  or  $t_{pLZ}$ .  
 C. Waveform 1 is for an output with internal conditions such that the output is low except when disabled by the output control. Waveform 2 is for an output with internal conditions such that the output is high except when disabled by the output control.

Figure 1. Load Circuits and Voltage Waveforms

**APPLICATION INFORMATION**

**simplified analog input analysis**

Using the equivalent circuit in Figure 2, the time required to charge the analog input capacitance from 0 V to  $V_S$  within 1/2 LSB can be derived as follows:

The capacitance charging voltage is given by

$$V_C = V_S \left(1 - e^{-t_c/R_t C_i}\right) \tag{1}$$

where

$$R_t = R_s + r_i$$

The final voltage to 1/2 LSB is given by

$$V_C (1/2 \text{ LSB}) = V_S - (V_S/2048) \tag{2}$$

Equating equation 1 to equation 2 and solving for time ( $t_c$ ) gives

$$V_S - (V_S/2048) = V_S \left(1 - e^{-t_c/R_t C_i}\right) \tag{3}$$

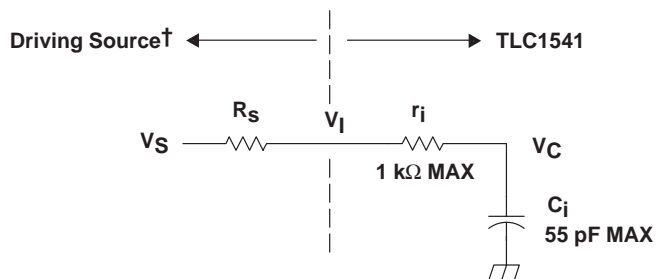
and

$$t_c (1/2 \text{ LSB}) = R_t \times C_i \times \ln(2048) \tag{4}$$

Therefore, with the values given, the time for the analog input signal to settle is

$$t_c (1/2 \text{ LSB}) = (R_s + 1 \text{ k}\Omega) \times 55 \text{ pF} \times \ln(2048) \tag{5}$$

This time must be less than the converter sample time shown in the timing diagrams.



$V_I$  = Input Voltage at INPUT A0–A10  
 $V_S$  = External Driving Source Voltage  
 $R_S$  = Source Resistance  
 $r_i$  = Input Resistance  
 $C_i$  = Input Capacitance

† Driving source requirements:

- Noise and distortion levels for the source must be at least equivalent to the resolution of the converter.
- $R_S$  must be real at the input frequency.

**Figure 2. Equivalent Input Circuit Including the Driving Source**

---

## PRINCIPLES OF OPERATION

The TLC1541 is a complete data acquisition system on a single chip. The device includes such functions as sample and hold, 10-bit A/D converter, data and control registers, and control logic. For flexibility and access speed, there are four control inputs: chip select ( $\overline{CS}$ ), address input, I/O clock, and system clock. These control inputs and a TTL-compatible, 3-state output are intended for serial communications with a microprocessor or microcomputer. The TLC1541 can complete conversions in a maximum of 21  $\mu$ s, while complete input-conversion output cycles can be repeated at a maximum of 31  $\mu$ s.

The system and I/O clocks are normally used independently and do not require any special speed or phase relationships between them. This independence simplifies the hardware and software control tasks for the device. Once a clock signal within the specification range is applied to the SYSTEM CLOCK input, the control hardware and software need only be concerned with addressing the desired analog channel, reading the previous conversion result, and starting the conversion by using I/O CLOCK. SYSTEM CLOCK drives the conversion-crunching circuitry so that the control hardware and software need not be concerned with this task.

When  $\overline{CS}$  is high, DATA OUT is in a 3-state condition and ADDRESS INPUT and I/O CLOCK are disabled. This feature allows each of these terminals, with the exception of the  $\overline{CS}$  terminal, to share a control logic point with its counterpart terminals on additional A/D devices when using additional TLC1541 devices. In this way, the above feature serves to minimize the required control logic terminals when using multiple A/D devices.

The control sequence has been designed to minimize the time and effort required to initiate conversion and obtain the conversion result. A normal control sequence is:

1.  $\overline{CS}$  is brought low. To minimize errors caused by noise at the  $\overline{CS}$  input, the internal circuitry waits for two rising edges and then a falling edge of SYSTEM CLOCK after a low  $\overline{CS}$  transition before recognizing the low transition. This technique protects the device against noise when the device is used in a noisy environment. The MSB of the previous conversion result automatically appears on DATA OUT.
2. A new positive-logic multiplexer address shifts in on the first four rising edges of I/O CLOCK. The MSB of the address shifts in first. The negative edges of these four I/O clock pulses shift out the second, third, fourth, and fifth most-significant bits of the previous conversion result. The on-chip sample-and-hold begins sampling the newly addressed analog input after the fourth falling edge. The sampling operation basically involves the charging of internal capacitors to the level of the analog input voltage.
3. Five clock cycles are then applied to the I/O CLOCK, and the sixth, seventh, eighth, ninth, and tenth conversion bits shift out on the negative edges of these clock cycles.
4. The final tenth-clock cycle is applied to the I/O CLOCK. The falling edge of this clock cycle completes the analog sampling process and initiates the hold function. Conversion is then performed during the next 44 system clock cycles. After this final I/O clock cycle,  $\overline{CS}$  must go high or the I/O CLOCK must remain low for at least 44 system-clock cycles to allow for the conversion function.

$\overline{CS}$  can be kept low during periods of multiple conversion. When keeping  $\overline{CS}$  low during periods of multiple conversion, special care must be exercised to prevent noise glitches on I/O CLOCK. When glitches occur on I/O CLOCK, the I/O sequence between the microprocessor/controller and the device loses synchronization. Also, when  $\overline{CS}$  goes high, it must remain high until the end of the conversion. Otherwise, a valid falling edge of  $\overline{CS}$  causes a reset condition, which aborts the conversion in progress.

A new conversion may be started and the ongoing conversion simultaneously aborted by performing steps 1 through 4 before the 44 system-clock cycles occur. Such action yields the conversion result of the previous conversion and not the ongoing conversion.

# TLC1541

## 10-BIT ANALOG-TO-DIGITAL CONVERTER WITH SERIAL CONTROL AND 11 INPUTS

SLAS073C – DECEMBER 1995 – REVISED AUGUST 1996

---

### PRINCIPLES OF OPERATION

It is possible to connect SYSTEM CLOCK and I/O CLOCK together in special situations in which controlling-circuitry points must be minimized. In this case, the following special points must be considered in addition to the requirements of the normal control sequence previously described.

1. This device requires the first two clocks to recognize that  $\overline{CS}$  is at a valid low level when the common clock signal is used as an I/O CLOCK. When  $\overline{CS}$  is recognized by the device to be at a high level, the common clock signal is used for the conversion clock also.
2. A low  $\overline{CS}$  must be recognized before the I/O CLOCK can shift in an analog channel address. The device recognizes a  $\overline{CS}$  transition when the SYSTEM CLOCK terminal receives two positive edges and then a negative edge. For this reason, after a  $\overline{CS}$  negative edge, the first two clock cycles do not shift in the address. Also, upon shifting in the address,  $\overline{CS}$  must be raised after the tenth valid (12 total) I/O CLOCK. Otherwise, additional common-clock cycles are recognized as I/O CLOCK cycles and shift in an erroneous address.

For certain applications, such as strobing applications, it is necessary to start conversion at a specific point in time. This device accommodates these applications. Although the on-chip sample-and-hold begins sampling upon the negative edge of the fourth valid I/O CLOCK cycle, the hold function does not initiate until the negative edge of the tenth valid I/O CLOCK cycle. Thus, the control circuitry can leave the I/O CLOCK signal in its high state during the tenth valid I/O CLOCK cycle until the moment at which the analog signal must be converted. The TLC1541 continues sampling the analog input until the eighth valid falling edge of the I/O CLOCK. The control circuitry or software then immediately lowers the I/O CLOCK signal and holds the analog signal at the desired point in time and starts the conversion.



POST OFFICE BOX 655303 • DALLAS, TEXAS 75265

**PACKAGING INFORMATION**

| Orderable Device | Status<br>(1) | Package Type | Package Drawing | Pins | Package Qty | Eco Plan<br>(2)         | Lead/Ball Finish<br>(6) | MSL Peak Temp<br>(3) | Op Temp (°C) | Device Marking<br>(4/5) | Samples                 |
|------------------|---------------|--------------|-----------------|------|-------------|-------------------------|-------------------------|----------------------|--------------|-------------------------|-------------------------|
| TLC1541CDW       | ACTIVE        | SOIC         | DW              | 20   | 25          | Green (RoHS & no Sb/Br) | CU NIPDAU               | Level-1-260C-UNLIM   |              | TLC1541C                | <a href="#">Samples</a> |
| TLC1541CDWG4     | ACTIVE        | SOIC         | DW              | 20   | 25          | Green (RoHS & no Sb/Br) | CU NIPDAU               | Level-1-260C-UNLIM   |              | TLC1541C                | <a href="#">Samples</a> |
| TLC1541CFN       | ACTIVE        | PLCC         | FN              | 20   | 46          | Green (RoHS & no Sb/Br) | CU SN                   | Level-1-260C-UNLIM   |              | TLC1541C                | <a href="#">Samples</a> |
| TLC1541CFNG3     | ACTIVE        | PLCC         | FN              | 20   | 46          | Green (RoHS & no Sb/Br) | CU SN                   | Level-1-260C-UNLIM   |              | TLC1541C                | <a href="#">Samples</a> |
| TLC1541CN        | ACTIVE        | PDIP         | N               | 20   | 20          | Pb-Free (RoHS)          | CU NIPDAU               | N / A for Pkg Type   |              | TLC1541CN               | <a href="#">Samples</a> |
| TLC1541CNE4      | ACTIVE        | PDIP         | N               | 20   | 20          | Pb-Free (RoHS)          | CU NIPDAU               | N / A for Pkg Type   |              | TLC1541CN               | <a href="#">Samples</a> |
| TLC1541IDW       | ACTIVE        | SOIC         | DW              | 20   | 25          | Green (RoHS & no Sb/Br) | CU NIPDAU               | Level-1-260C-UNLIM   |              | TLC1541I                | <a href="#">Samples</a> |
| TLC1541IDWG4     | ACTIVE        | SOIC         | DW              | 20   | 25          | Green (RoHS & no Sb/Br) | CU NIPDAU               | Level-1-260C-UNLIM   |              | TLC1541I                | <a href="#">Samples</a> |
| TLC1541IDWR      | ACTIVE        | SOIC         | DW              | 20   | 2000        | Green (RoHS & no Sb/Br) | CU NIPDAU               | Level-1-260C-UNLIM   |              | TLC1541I                | <a href="#">Samples</a> |
| TLC1541IFN       | ACTIVE        | PLCC         | FN              | 20   | 46          | Green (RoHS & no Sb/Br) | CU SN                   | Level-1-260C-UNLIM   |              | TLC1541I                | <a href="#">Samples</a> |
| TLC1541IFNG3     | ACTIVE        | PLCC         | FN              | 20   | 46          | Green (RoHS & no Sb/Br) | CU SN                   | Level-1-260C-UNLIM   |              | TLC1541I                | <a href="#">Samples</a> |
| TLC1541IN        | ACTIVE        | PDIP         | N               | 20   | 20          | Pb-Free (RoHS)          | CU NIPDAU               | N / A for Pkg Type   |              | TLC1541IN               | <a href="#">Samples</a> |

(1) The marketing status values are defined as follows:

**ACTIVE:** Product device recommended for new designs.

**LIFEBUY:** TI has announced that the device will be discontinued, and a lifetime-buy period is in effect.

**NRND:** Not recommended for new designs. Device is in production to support existing customers, but TI does not recommend using this part in a new design.

**PREVIEW:** Device has been announced but is not in production. Samples may or may not be available.

**OBSELETE:** TI has discontinued the production of the device.

(2) Eco Plan - The planned eco-friendly classification: Pb-Free (RoHS), Pb-Free (RoHS Exempt), or Green (RoHS & no Sb/Br) - please check <http://www.ti.com/productcontent> for the latest availability information and additional product content details.

**TBD:** The Pb-Free/Green conversion plan has not been defined.

---

**Pb-Free (RoHS):** TI's terms "Lead-Free" or "Pb-Free" mean semiconductor products that are compatible with the current RoHS requirements for all 6 substances, including the requirement that lead not exceed 0.1% by weight in homogeneous materials. Where designed to be soldered at high temperatures, TI Pb-Free products are suitable for use in specified lead-free processes.

**Pb-Free (RoHS Exempt):** This component has a RoHS exemption for either 1) lead-based flip-chip solder bumps used between the die and package, or 2) lead-based die adhesive used between the die and leadframe. The component is otherwise considered Pb-Free (RoHS compatible) as defined above.

**Green (RoHS & no Sb/Br):** TI defines "Green" to mean Pb-Free (RoHS compatible), and free of Bromine (Br) and Antimony (Sb) based flame retardants (Br or Sb do not exceed 0.1% by weight in homogeneous material)

<sup>(3)</sup> MSL, Peak Temp. - The Moisture Sensitivity Level rating according to the JEDEC industry standard classifications, and peak solder temperature.

<sup>(4)</sup> There may be additional marking, which relates to the logo, the lot trace code information, or the environmental category on the device.

<sup>(5)</sup> Multiple Device Markings will be inside parentheses. Only one Device Marking contained in parentheses and separated by a "~" will appear on a device. If a line is indented then it is a continuation of the previous line and the two combined represent the entire Device Marking for that device.

<sup>(6)</sup> Lead/Ball Finish - Orderable Devices may have multiple material finish options. Finish options are separated by a vertical ruled line. Lead/Ball Finish values may wrap to two lines if the finish value exceeds the maximum column width.

**Important Information and Disclaimer:**The information provided on this page represents TI's knowledge and belief as of the date that it is provided. TI bases its knowledge and belief on information provided by third parties, and makes no representation or warranty as to the accuracy of such information. Efforts are underway to better integrate information from third parties. TI has taken and continues to take reasonable steps to provide representative and accurate information but may not have conducted destructive testing or chemical analysis on incoming materials and chemicals. TI and TI suppliers consider certain information to be proprietary, and thus CAS numbers and other limited information may not be available for release.

In no event shall TI's liability arising out of such information exceed the total purchase price of the TI part(s) at issue in this document sold by TI to Customer on an annual basis.

## TAPE AND REEL INFORMATION



### QUADRANT ASSIGNMENTS FOR PIN 1 ORIENTATION IN TAPE



\*All dimensions are nominal

| Device     | Package Type | Package Drawing | Pins | SPQ  | Reel Diameter (mm) | Reel Width W1 (mm) | A0 (mm) | B0 (mm) | K0 (mm) | P1 (mm) | W (mm) | Pin1 Quadrant |
|------------|--------------|-----------------|------|------|--------------------|--------------------|---------|---------|---------|---------|--------|---------------|
| TLC1541DWR | SOIC         | DW              | 20   | 2000 | 330.0              | 24.4               | 10.8    | 13.3    | 2.7     | 12.0    | 24.0   | Q1            |

**TAPE AND REEL BOX DIMENSIONS**



\*All dimensions are nominal

| Device      | Package Type | Package Drawing | Pins | SPQ  | Length (mm) | Width (mm) | Height (mm) |
|-------------|--------------|-----------------|------|------|-------------|------------|-------------|
| TLC1541IDWR | SOIC         | DW              | 20   | 2000 | 367.0       | 367.0      | 45.0        |

## IMPORTANT NOTICE

Texas Instruments Incorporated and its subsidiaries (TI) reserve the right to make corrections, enhancements, improvements and other changes to its semiconductor products and services per JESD46, latest issue, and to discontinue any product or service per JESD48, latest issue. Buyers should obtain the latest relevant information before placing orders and should verify that such information is current and complete. All semiconductor products (also referred to herein as "components") are sold subject to TI's terms and conditions of sale supplied at the time of order acknowledgment.

TI warrants performance of its components to the specifications applicable at the time of sale, in accordance with the warranty in TI's terms and conditions of sale of semiconductor products. Testing and other quality control techniques are used to the extent TI deems necessary to support this warranty. Except where mandated by applicable law, testing of all parameters of each component is not necessarily performed.

TI assumes no liability for applications assistance or the design of Buyers' products. Buyers are responsible for their products and applications using TI components. To minimize the risks associated with Buyers' products and applications, Buyers should provide adequate design and operating safeguards.

TI does not warrant or represent that any license, either express or implied, is granted under any patent right, copyright, mask work right, or other intellectual property right relating to any combination, machine, or process in which TI components or services are used. Information published by TI regarding third-party products or services does not constitute a license to use such products or services or a warranty or endorsement thereof. Use of such information may require a license from a third party under the patents or other intellectual property of the third party, or a license from TI under the patents or other intellectual property of TI.

Reproduction of significant portions of TI information in TI data books or data sheets is permissible only if reproduction is without alteration and is accompanied by all associated warranties, conditions, limitations, and notices. TI is not responsible or liable for such altered documentation. Information of third parties may be subject to additional restrictions.

Resale of TI components or services with statements different from or beyond the parameters stated by TI for that component or service voids all express and any implied warranties for the associated TI component or service and is an unfair and deceptive business practice. TI is not responsible or liable for any such statements.

Buyer acknowledges and agrees that it is solely responsible for compliance with all legal, regulatory and safety-related requirements concerning its products, and any use of TI components in its applications, notwithstanding any applications-related information or support that may be provided by TI. Buyer represents and agrees that it has all the necessary expertise to create and implement safeguards which anticipate dangerous consequences of failures, monitor failures and their consequences, lessen the likelihood of failures that might cause harm and take appropriate remedial actions. Buyer will fully indemnify TI and its representatives against any damages arising out of the use of any TI components in safety-critical applications.

In some cases, TI components may be promoted specifically to facilitate safety-related applications. With such components, TI's goal is to help enable customers to design and create their own end-product solutions that meet applicable functional safety standards and requirements. Nonetheless, such components are subject to these terms.

No TI components are authorized for use in FDA Class III (or similar life-critical medical equipment) unless authorized officers of the parties have executed a special agreement specifically governing such use.

Only those TI components which TI has specifically designated as military grade or "enhanced plastic" are designed and intended for use in military/aerospace applications or environments. Buyer acknowledges and agrees that any military or aerospace use of TI components which have **not** been so designated is solely at the Buyer's risk, and that Buyer is solely responsible for compliance with all legal and regulatory requirements in connection with such use.

TI has specifically designated certain components as meeting ISO/TS16949 requirements, mainly for automotive use. In any case of use of non-designated products, TI will not be responsible for any failure to meet ISO/TS16949.

### Products

|                              |  |
|------------------------------|--|
| Audio                        | <a href="http://www.ti.com/audio">www.ti.com/audio</a>                               |
| Amplifiers                   | <a href="http://amplifier.ti.com">amplifier.ti.com</a>                               |
| Data Converters              | <a href="http://dataconverter.ti.com">dataconverter.ti.com</a>                       |
| DLP® Products                | <a href="http://www.dlp.com">www.dlp.com</a>   |
| DSP                          | <a href="http://dsp.ti.com">dsp.ti.com</a>   |
| Clocks and Timers            | <a href="http://www.ti.com/clocks">www.ti.com/clocks</a>                             |
| Interface                    | <a href="http://interface.ti.com">interface.ti.com</a>                               |
| Logic                        | <a href="http://logic.ti.com">logic.ti.com</a>                                       |
| Power Mgmt                   | <a href="http://power.ti.com">power.ti.com</a>                                       |
| Microcontrollers             | <a href="http://microcontroller.ti.com">microcontroller.ti.com</a>                   |
| RFID                         | <a href="http://www.ti-rfid.com">www.ti-rfid.com</a>                                 |
| OMAP Applications Processors | <a href="http://www.ti.com/omap">www.ti.com/omap</a>                                 |
| Wireless Connectivity        | <a href="http://www.ti.com/wirelessconnectivity">www.ti.com/wirelessconnectivity</a> |

### Applications

|                               |  |
|-------------------------------|--|
| Automotive and Transportation | <a href="http://www.ti.com/automotive">www.ti.com/automotive</a>                         |
| Communications and Telecom    | <a href="http://www.ti.com/communications">www.ti.com/communications</a>                 |
| Computers and Peripherals     | <a href="http://www.ti.com/computers">www.ti.com/computers</a>                           |
| Consumer Electronics          | <a href="http://www.ti.com/consumer-apps">www.ti.com/consumer-apps</a>                   |
| Energy and Lighting           | <a href="http://www.ti.com/energy">www.ti.com/energy</a>                                 |
| Industrial                    | <a href="http://www.ti.com/industrial">www.ti.com/industrial</a>                         |
| Medical                       | <a href="http://www.ti.com/medical">www.ti.com/medical</a>                               |
| Security                      | <a href="http://www.ti.com/security">www.ti.com/security</a>                             |
| Space, Avionics and Defense   | <a href="http://www.ti.com/space-avionics-defense">www.ti.com/space-avionics-defense</a> |
| Video and Imaging             | <a href="http://www.ti.com/video">www.ti.com/video</a>                                   |

### TI E2E Community

[e2e.ti.com](http://e2e.ti.com)