

## Single-Phase PWM Controller with Light-Load Efficiency Optimization

### FEATURES

- 1.5-V to 19-V Conversion Voltage Range
- 4.5-V to 14-V Supply Voltage Range
- Voltage Mode Control
- Skip Mode at Light Load for Efficiency Optimization
- High Precision 0.5% Internal 0.8-V Reference
- Adjustable Output Voltage from 0.8 V to  $0.7 \times V_{IN}$
- Internal Soft-Start
- Supports Pre-biased Startup
- Supports Soft-Stop
- Programmable Switching Frequency from 250 kHz to 1 MHz
- Overcurrent Protection
- Inductor DCR Sensing for Overcurrent
- $R_{DS(on)}$  Sensing for Zero Current Detection
- Overvoltage and Undervoltage Protection
- Open Drain Power Good Indication
- Internal Bootstrap Switch
- Integrated High-Current Drivers Powered by VCCDR
- Small 3 mm x 3 mm, 16-Pin QFN Package

### APPLICATIONS

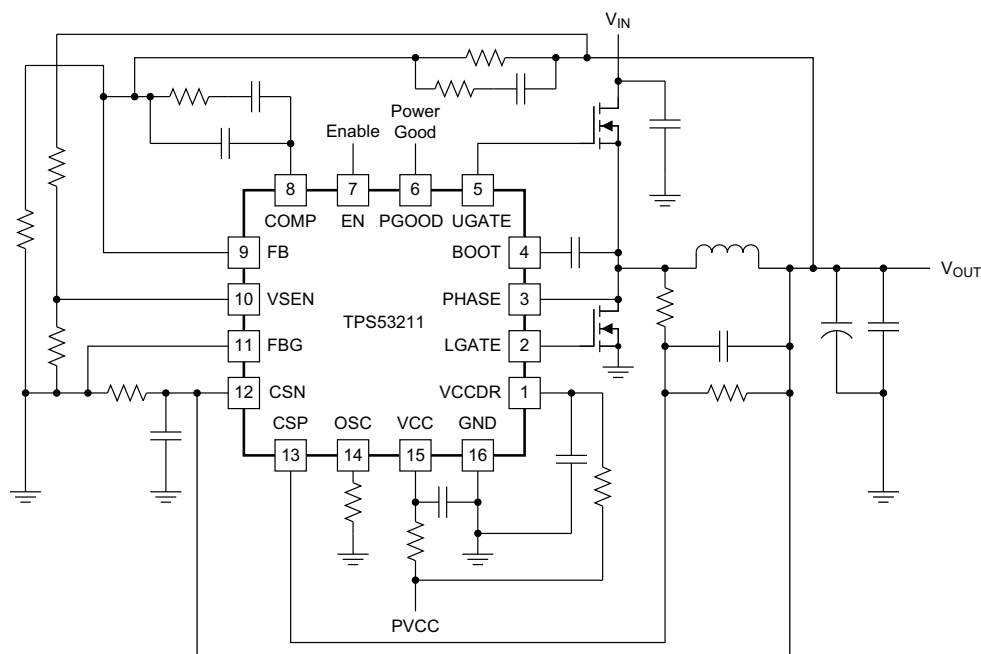
- Server and Desktop Computer Subsystem Power Supplies
- DDR Memory and Termination Supply
- Distributed Power Supply
- General DC/DC Converter

### DESCRIPTION

TPS53211 is a single phase PWM controller with integrated high-current drivers. It is used for 1.5 V up to 19 V conversion voltage.

TPS53211 features a skip mode solution that optimizes the efficiency at light load condition without compromising the output voltage ripple. The device provides pre-biased startup, soft-stop, integrated bootstrap switch, power good function, EN/Input UVLO protection. It supports conversion voltages up to 19 V, and output voltages adjustable from 0.8 V to  $0.7 \times V_{IN}$ .

The TPS53211 is available in the 3 mm x 3 mm, 16-pin, QFN package (Green RoHs compliant and Pb free) and is specified from  $-40^{\circ}\text{C}$  to  $85^{\circ}\text{C}$ .



UDG-11173



Please be aware that an important notice concerning availability, standard warranty, and use in critical applications of Texas Instruments semiconductor products and disclaimers thereto appears at the end of this data sheet.



These devices have limited built-in ESD protection. The leads should be shorted together or the device placed in conductive foam during storage or handling to prevent electrostatic damage to the MOS gates.

### ORDERING INFORMATION

TA	PACKAGE	ORDERABLE DEVICE NUMBER	PINS	OUTPUT SUPPLY	MINIMUM QUANTITY	ECO PLAN
-40°C to 85°C	Plastic QFN (RGT)	TPS53211RGTR	16	Tape and Reel	3000	Green (RoHS and no Pb/Br)
		TPS53211RGTT		Mini Reel	250	

### ABSOLUTE MAXIMUM RATINGS<sup>(1)</sup>

over operating free-air temperature range (unless otherwise noted)

			MIN	MAX	UNITS
Input voltage range <sup>(2)</sup>	VCC, EN		-0.3	15	V
	VCCDR		-0.3	7.7	
	BOOT	dc	-0.3	36	
	BOOT to PHASE	dc	-0.3	7.7	
		transient < 200 ns	-5	7.7	
	PHASE	dc	-3	26	
		transient < 200 ns	-5	30	
FB, VSEN, OSC		-0.3	3.6		
CSP, CSN	$V_{VCC} > 7.5\text{ V}$	-0.7	6		
	$V_{VCC} \leq 7.5\text{ V}$	-0.7	VCC-1.5		
Output voltage range <sup>(3)</sup>	UGATE		-0.3	36	V
	UGATE to PHASE, LGATE	dc	-0.3	7.7	
		transient < 200 ns	-5	7.7	
	COMP		-0.3	3.6	
PGOOD		-0.3	15		
Ground pins	GND		-0.3	0.3	V
	FBG		-0.3	0.3	
Electrostatic discharge	Human Body Model (HBM)			1500	V
	Charged Device Model (CDM)			500	
Storage junction temperature			-55	150	°C
Operating junction temperature			-40	150	°C

- Stresses beyond those listed under absolute maximum ratings may cause permanent damage to the device. These are stress ratings only and functional operation of the device at these or any other conditions beyond those indicated under recommended operating conditions is not implied. Exposure to absolute-maximum-rated conditions for extended periods may affect device reliability.
- All voltage values are with respect to the network ground terminal unless otherwise noted.
- Voltage values are with respect to the SW terminal.

### THERMAL INFORMATION

THERMAL METRIC <sup>(1)</sup>		TPS53211	UNITS
		QFN	
		16 PINS	
$\theta_{JA}$	Junction-to-ambient thermal resistance	51.3	°C/W
$\theta_{JCTop}$	Junction-to-case (top) thermal resistance	85.4	
$\theta_{JB}$	Junction-to-board thermal resistance	20.1	
$\Psi_{JT}$	Junction-to-top characterization parameter	1.3	
$\Psi_{JB}$	Junction-to-board characterization parameter	19.4	
$\theta_{JCbott}$	Junction-to-case (bottom) thermal resistance	6	

- For more information about traditional and new thermal metrics, see the *IC Package Thermal Metrics* application report, [SPRA953](http://www.ti.com/lit/zip/spra953).

**RECOMMENDED OPERATING CONDITIONS**

		MIN	TYP	MAX	UNITS	
Input voltage range	VCC	4.5		14	V	
	EN	-0.1	$V_{VCC}+0.1$			
	VCCDR	4.5		7		
	BOOT	dc		34		
	BOOT to PHASE	dc	-0.1			7
		transient < 200ns	-3			7
	PHASE	dc	-1			24
		transient < 200ns	-3			28
	FB, VSEN, OSC	-0.1		3.3		
CSP, CSN	$V_{VCC} > 7.5 V$	-0.1		5.5		
	$V_{VCC} \leq 7.5 V$	-0.1	$V_{VCC}-2$			
Output voltage range	UGATE	-0.1		34	V	
	UGATE to PHASE, LGATE	dc	-0.1	7		
		transient < 200 ns	-3			7
	COMP	-0.1		3.3		
PGOOD	-0.1		12			
Ground pins	GND	-0.1		0.1		
	FBG	-0.1		0.1		
Junction temperature range, $T_J$		-40		125	°C	
Operating free-air temperature, $T_A$		-40		85	°C	

# TPS53211

SLUSAA9A – SEPTEMBER 2011 – REVISED NOVEMBER 2012

[www.ti.com](http://www.ti.com)

## ELECTRICAL CHARACTERISTICS<sup>(1)</sup>

over operating free-air temperature range, VCC = 12V, PGND = GND (unless otherwise noted)

PARAMETER		TEST CONDITIONS	MIN	TYP	MAX	UNIT
<b>INPUT SUPPLY</b>						
V <sub>VCC</sub>	VCC supply voltage	Nominal input voltage range	4.5		12	V
V <sub>POR</sub>	VCC POR threshold	Ramp up; EN = 'HI'	4.1	4.25	4.4	V
V <sub>PORHYS</sub>	VCC POR hysteresis	VCCDR POR hysteresis		200		mV
I <sub>CC_STBY</sub>	Standby current	EN pin is low. V <sub>VCC</sub> = 12 V			60	μA
R <sub>Boot</sub>	R <sub>ds(on)</sub> of the boot strap switch			10		Ω
<b>DRIVER SUPPLY</b>						
V <sub>CCDR</sub>	VCCDR Supply voltage	Nominal input voltage range	4.5		7.0	V
V <sub>PORDR</sub>	VCCDR POR threshold	Ramp up; EN = 'HI'	3.15	3.32	3.50	V
V <sub>PORHYSDR</sub>	VCCDR POR hysteresis	VCCDR POR hysteresis		220		mV
I <sub>CCDR_STBY</sub>	Standby current	EN pin is low. V <sub>VCC</sub> = 12 V			100	μA
<b>REFERENCE</b>						
V <sub>VREF</sub>	VREF	Internal precision reference voltage		0.8		V
TOL <sub>VREF</sub>	VREF tolerance	Close loop trim. 0°C ≤ T <sub>J</sub> ≤ 70°C	-0.5%		0.5%	
<b>ERROR AMPLIFIER</b>						
UGBW <sup>(2)</sup>	Unity gain bandwidth		14			MHz
AOL <sup>(2)</sup>	Open loop gain		80			dB
I <sub>FB(int)</sub>	FB Input leakage current	Sourced from FB pin		10		nA
I <sub>EA(max)</sub>	Output sinking and sourcing current			2.5		mA
SR <sup>(2)</sup>	Slew rate			5		V/μs
<b>ENABLE</b>						
V <sub>ENH</sub>	EN logic high		2.2			V
V <sub>ENL</sub>	EN logic low				600	mV
I <sub>EN</sub>	EN pin current				12	μA
<b>SOFT START</b>						
t <sub>SS_delay</sub>	Delay after EN asserting	EN = 'HI' to "switching enabled"		1024/f <sub>SW</sub>		ms
t <sub>PGDELAY</sub>	PGOOD startup delay time	PG delay after soft-start begins		1560/f <sub>SW</sub>		ms
<b>RAMP</b>						
	Ramp amplitude	4.5V < V <sub>VCC</sub> < 12 V		2		V
<b>PWM</b>						
t <sub>MIN(on)</sub> <sup>(2)</sup>	Minimum ON time		40			ns
D <sub>MAX</sub> <sup>(2)</sup>	Maximum duty cycle	f <sub>SW</sub> = 1 MHz	70%			
<b>SWITCHING FREQUENCY</b>						
f <sub>SW(typ)</sub>	Typical switching frequency	R <sub>OSC</sub> = 61.9 kΩ	360	400	440	kHz
f <sub>SW(min)</sub>	Minimum switching frequency	R <sub>OSC</sub> = 250 kΩ		250		kHz
f <sub>SW(max)</sub>	Maximum switching frequency	R <sub>OSC</sub> = 14 kΩ		1		MHz
f <sub>SW(tol)</sub>	Switching frequency tolerance	R <sub>OSC</sub> > 12.4 kΩ	-20%		20%	
<b>OVERCURRENT</b>						
V <sub>OC_TH</sub>	CSP-CSN threshold for DCR sensing	T <sub>A</sub> = 25°C	17	20	23	mV

(1) See PS pin description for levels.

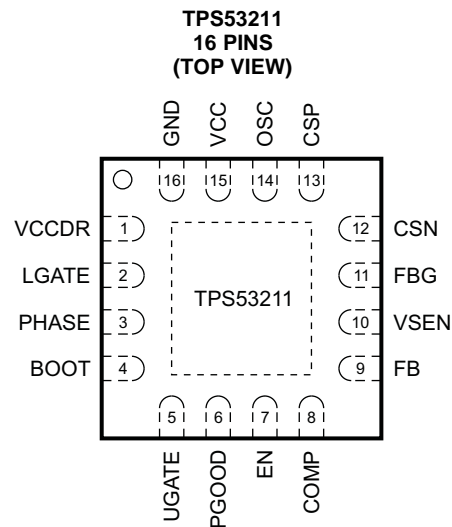
(2) Ensured by design. Not production tested.

**ELECTRICAL CHARACTERISTICS<sup>(1)</sup> (continued)**

over operating free-air temperature range, VCC = 12V, PGND = GND (unless otherwise noted)

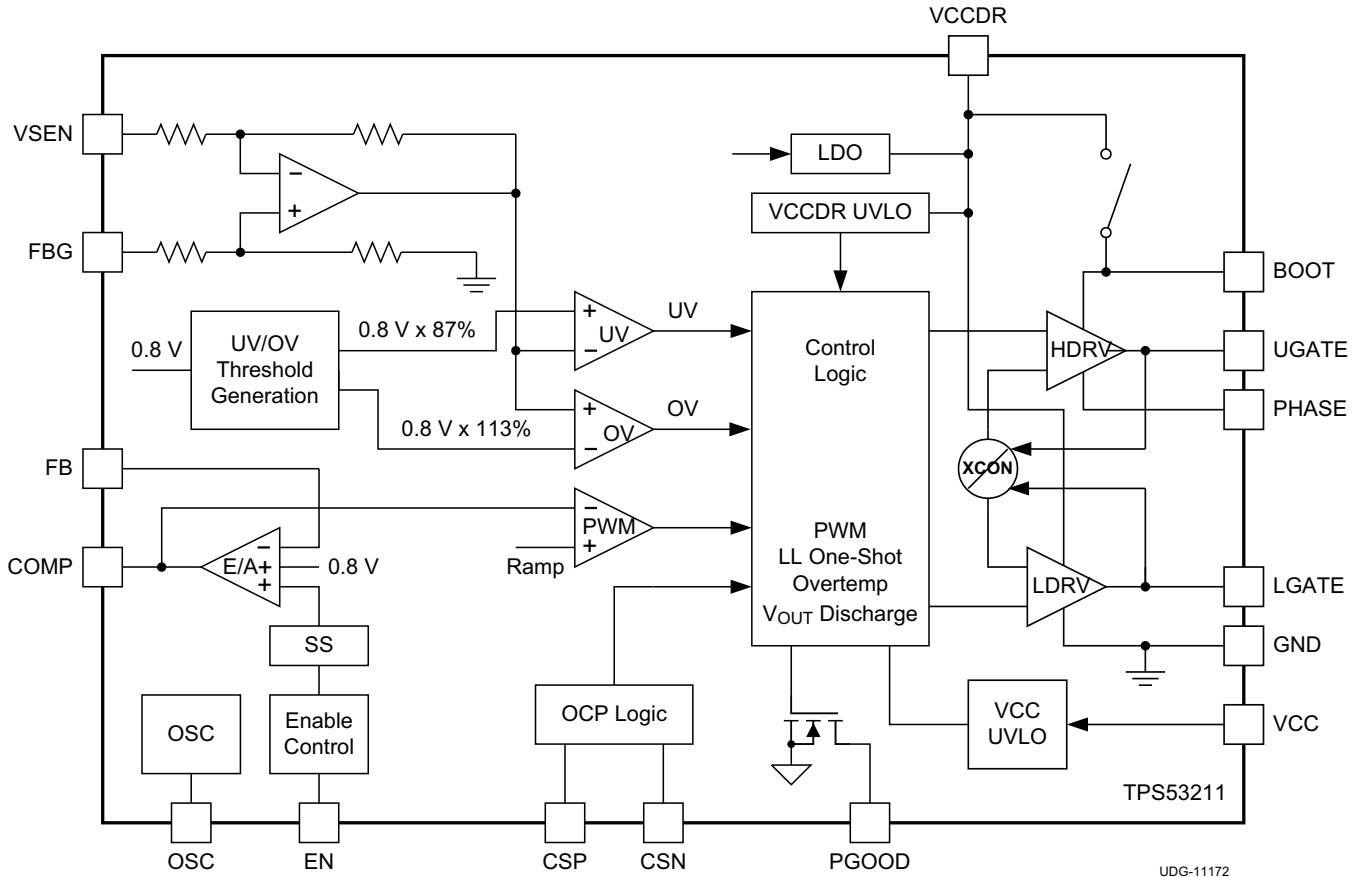
PARAMETER		TEST CONDITIONS	MIN	TYP	MAX	UNIT
<b>GATE DRIVERS</b>						
R <sub>HDHI</sub> <sup>(3)</sup>	High-side driver sourcing resistance	(V <sub>BOOT</sub> – V <sub>PH</sub> ) forced to 5 V, high state		1		Ω
R <sub>HDLO</sub>	High-side driver sinking resistance	(V <sub>BOOT</sub> – V <sub>PH</sub> ) forced to 5 V, low state		0.5		Ω
R <sub>LDHI</sub>	Low-side driver sourcing resistance	(V <sub>CCDR-</sub> – GND) = 5 V, high state		0.7		Ω
R <sub>LDLO</sub>	Low-side driver sinking resistance	V <sub>CCDR-</sub> – GND = 5 V, low state		0.33		Ω
<b>POWER GOOD</b>						
V <sub>PGDL</sub>	PG lower threshold	Measured at VSEN w/r/t VREF		87%	89%	
V <sub>PGDU</sub>	PG upper threshold	Measured at VSEN w/r/t VREF	110%	113%	116%	
V <sub>PGHYS</sub>	PG hysteresis	Measured at VSEN w/r/t VREF		3.5%		
t <sub>OVPDLY</sub>	PG delay time at OVP	Time from VSEN out of +12.5% of VREF to PG low		2.3		μs
t <sub>UVPDLY</sub>	PG delay time at UVP	Time from VSEN out of –12.5% of VREF to PG low		2.3		μs
V <sub>INMINPG</sub>	Minimum V <sub>CC</sub> voltage for valid PG at startup.	Measured at V <sub>VCC</sub> with 1 mA (or 2 mA) sink current on PG pin at startup.		1		V
V <sub>PGPD</sub>	PG pull-down voltage	Pull down voltage with 4 mA sink current		0.2	0.4	V
I <sub>PGLK</sub>	PG leakage current	Hi-Z leakage current, apply 6.5 V in off state	7.8	12	16.2	μA
<b>OUTPUT OVERVOLTAGE AND UNDERVOLTAGE PROTECTION</b>						
V <sub>Ovth</sub>	OVP threshold	Measured at the VSEN wrt. VREF.	110%	113%	116%	
V <sub>Uvth</sub>	UVP threshold	Measured at the VSEN wrt. VREF.		87%	89%	
t <sub>OVPDLY</sub>	OVP delay time	Time from VSEN out of +12.5% of VREF to OVP fault		2.3		μs
t <sub>UVPDLY</sub> <sup>(3)</sup>	UVP delay time	Time from VSEN out of –12.5% of VREF to UVP fault		80		μs
<b>THERMAL SHUTDOWN</b>						
THSD <sup>(3)</sup>	Thermal shutdown	Latch off controller, attempt soft-stop	130	140	150	°C
THSD <sub>HYS</sub> <sup>(3)</sup>	Thermal shutdown hysteresis	Controller starts again after temperature has dropped		40		°C

(3) Ensured by design. Not production tested.

**DEVICE INFORMATION**

**PIN FUNCTIONS**

PIN		I/O	DESCRIPTION
NAME	NO.		
BOOT	4	I	Supply input for high-side drive (boot strap pin). Connect capacitor from this pin to SW pin
COMP	8	O	Error amplifier compensation terminal. Type III compensation method is generally recommended for stability.
CSN	12	I	Current sense negative input.
CSP	13	I	Current sense positive input
EN	7	I	Enable.
FB	9	I	Voltage feedback. Use for OVP, UVP and PGD determination.
FBG	11	G	Feedback ground for output voltage sense.
GND	16	G	Logic ground and low-side gate drive return.
PHASE	3	O	Output inductor connection to integrated power devices.
LGATE	2	O	Low-side gate drive output.
OSC	14	O	Frequency programming input.
PGOOD	6	O	Power good output flag. Open drain output. Pull up to an external rail via a resistor.
UGATE	5	O	High-side gate drive output.
VCC	15	I	Supply input for analog control circuitry.
VCCDR	1	I/O	Bias voltage for integrated drivers.
VSEN	10	I	Output voltage sense

FUNCTIONAL BLOCK DIAGRAM



TYPICAL CHARACTERISTICS

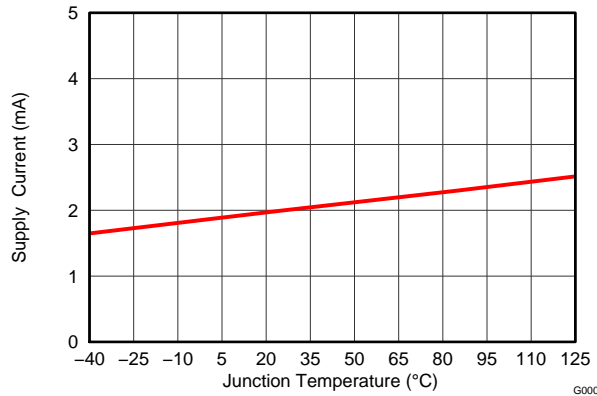


Figure 1. VCC Current vs. Junction Temperature

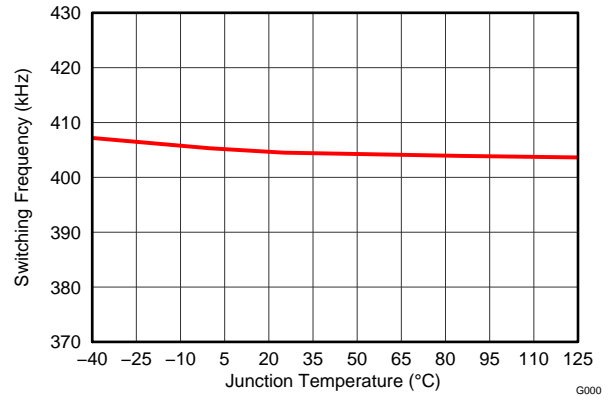


Figure 2. Switching Frequency vs. Junction Temperature

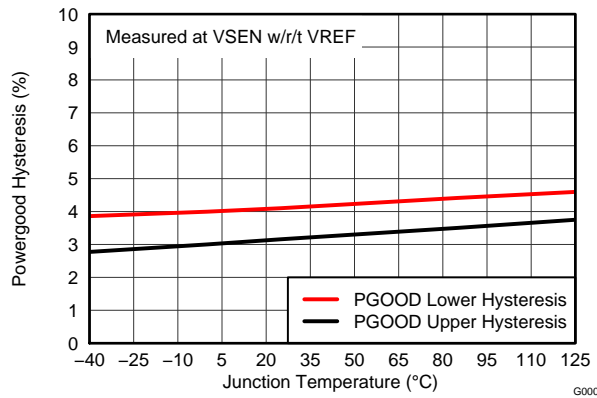


Figure 3. Power Good Hysteresis vs. Junction Temperature

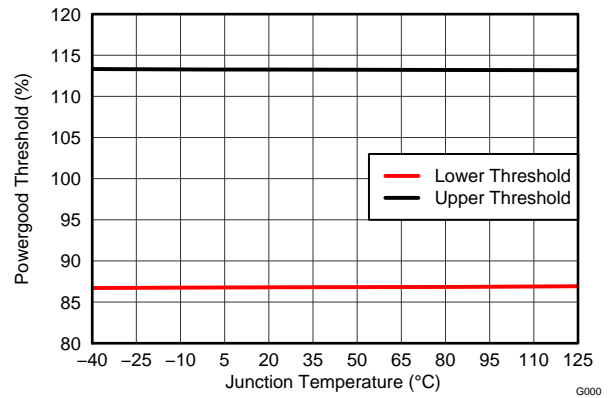


Figure 4. Power Good Threshold vs. Junction Temperature

## DETAILED DESCRIPTION

### Introduction

The TPS53211 is a single-channel synchronous buck controller with integrated high-current drivers. The TPS53211 is used for 1.5 V up to 19 V conversion voltage, and provides output voltage from 0.8 V to 0.7 V<sub>IN</sub>. It operates with programmable switching frequency ranging from 250 kHz to 1 MHz.

This device employs a skip mode solution that optimizes the efficiency at light-load condition without compromising the output voltage ripple. The device provides pre-bias startup, integrated bootstrap switch, power good function, EN/Input UVLO protection. The TPS53211 is available in the 3 mm by 3mm 16-pin QFN package and is specified from –40°C to 85°C.

### Switching Frequency Setting

The clock frequency is programmed by the value of the resistor connected from the OSC pin to ground. The switching frequency is programmable from 250 kHz to 1 MHz. The relation between the frequency and the OSC resistance is given by [Equation 1](#).

$$f_{SW} = 200 + \frac{10^6}{(R_{OSC} \times 78.5) + 150}$$

where

- R<sub>OSC</sub> is the resistor connected from the OSC pin to ground in kΩ
  - f<sub>SW</sub> is the desired switching frequency in kHz
- (1)

### Soft-Start Function

The soft-start function reduces the inrush current during the start-up. A slow rising reference voltage is generated by the soft-start circuitry and sent to the input of the error amplifier. When the soft-start ramp voltage is less than 800 mV, the error amplifier uses this ramp voltage as the reference. When the ramp voltage reaches 800 mV, a fixed 800 mV reference voltage is utilized for the error amplifier. The soft-start function is implemented only when VCC and VCCDR are above the respective UVLO thresholds and the EN pin is released.

When the soft-start begins, the device initially waits for 1024 clock cycles and then starts to ramp up the reference. After the reference voltage begins to rise, the PGOOD signal goes high after a 1560 clock-cycle delay.

### UVLO Function

The TPS53211 provides UVLO protection for the input supply (VCC) and driver supply (VCCDR). If the supply voltage is lower than UVLO threshold voltage minus the hysteresis, the device shuts off. When the voltage rises above the threshold voltage, the device restarts. The typical UVLO rising threshold is 4.25 V for VCC and 3.32 V for VCCDR. Hysteresis of 200 mV for VCC and 220 mV for VCCDR are also provided to prevent glitch.

### Overcurrent Protection

The TPS53211 continuously monitors the current flowing through the inductor. The inductor DCR current sense is implemented by comparing and monitoring the difference between the CSP and CSN pins. DCR current sensing requires time constant matching between the inductor and the sensing network:

$$\frac{L}{DCR} = R \times C$$
(2)

TPS53211 has two level OC thresholds: 20 mV and 30 mV for the voltage between the CSP and CSN pins.

If the voltage between the CSP and CSN pins exceeds the 20 mV current limit threshold, an OC counter starts to increment to count the occurrence of the overcurrent events. The converter shuts down immediately when the OC counter reaches four (4). The OC counter resets if the detected current is lower than the OC threshold after an OC event. Normal operation can only be restored by cycling the VCC voltage.

If the voltage between the CSP and CSN pins is higher than 30 mV, the device latches off immediately. Normal operation can be restored only by cycling the VCC voltage.

## TPS53211

SLUSAA9A – SEPTEMBER 2011 – REVISED NOVEMBER 2012

[www.ti.com](http://www.ti.com)

The TPS53211 has thermal compensation to adjust the OCP threshold in order to reduce the influence of inductor DCR variation due to temperature change. The OCP level has a change rate of 0.35%/°C.

### Overvoltage and Undervoltage Protection

The TPS53211 monitors the VSEN pin voltage to detect the overvoltage and undervoltage conditions. A resistor divider with the same ratio as on the FB input is recommended for the VSEN input. The overvoltage and undervoltage thresholds are set to  $\pm 13\%$  of  $V_{OUT}$ .

When the VSEN voltage is greater than 113% of the reference, the overvoltage protection is activated. The high-side MOSFET turns off and the low-side MOSFET turns on. Normal operation can be restored only by cycling the VCC pin voltage.

When the VSEN voltage is lower than 87% of the reference voltage, the undervoltage protection is triggered and the PGOOD signal goes low. After 80  $\mu$ s, the controller is latched off with both the upper and lower MOSFETs turned off.

After both the undervoltage and overvoltage events, the device is latched off. Normal operation can be restored only by cycling the VCC pin voltage.

### Power Good

The TPS53211 monitors the output voltage through the VSEN. During start up, the power good signal delay after the reference begins to rise is 1560 clock cycles. After this delay, if the output voltage is within  $\pm 9.5\%$  of the target value, PGOOD signal goes high.

At steady state, if the VSEN voltage is within 113% and 87% of the reference voltage, the power good signal remains high. If VSEN voltage is outside of this limit, PGOOD pin is pulled low by the internal open drain output. The PGOOD output is an open drain and requires an external pull-up resistor.

### Over-Temperature Protection

The TPS53211 continuously monitors the die temperature. If the die temperature exceeds the threshold value (140°C typical), the device shuts off. When the device temperature lowers to 40°C below the over-temperature threshold, it restarts and return to normal operation.

APPLICATION INFORMATION

The following example illustrates the design process and component selection for a single output synchronous buck converter using TPS53211. The schematic of a design example is shown in Figure 5. The specifications of the converter are listed in Table 1.

Table 1. Specification of the Single Output Synchronous Buck Converter

PARAMETER	TEST CONDITION	MIN	TYP	MAX	UNIT
V <sub>IN</sub> Input voltage		10.8	12	13.2	V
V <sub>OUT</sub> Output voltage			1.05		V
V <sub>RIPPLE</sub> Output ripple	I <sub>OUT</sub> = 20 A		1% of V <sub>OUT</sub>		V
I <sub>OUT</sub> Output current			20		A
f <sub>SW</sub> Switching frequency			400		kHz

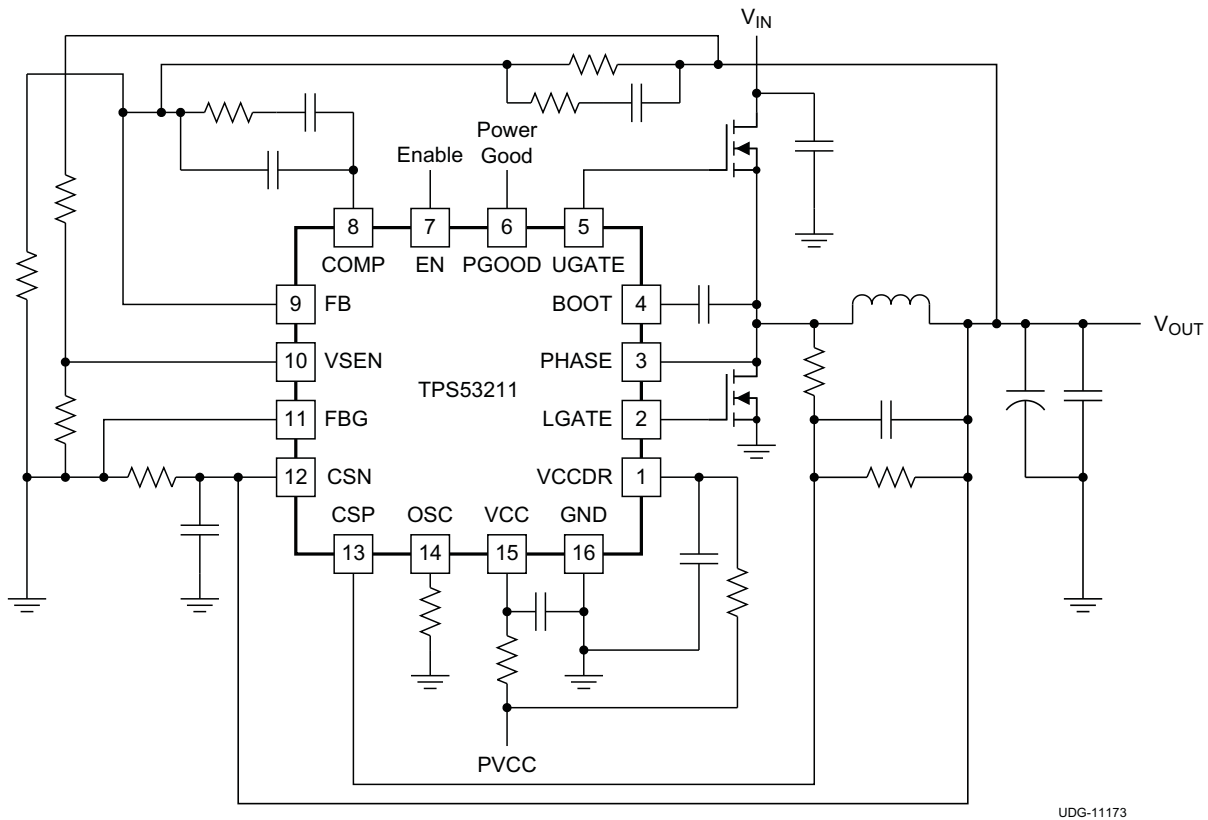


Figure 5. Typical 12-V Input Application Circuit

Output Inductor Selection

Determine an inductance value that yields a ripple current of approximately 20% to 40% of maximum output current. The inductor ripple current is determined by Equation 3:

$$I_{L(\text{ripple})} = \frac{1}{L \times f_{\text{SW}}} \times \frac{(V_{\text{IN}} - V_{\text{OUT}}) \times V_{\text{OUT}}}{V_{\text{IN}}} \tag{3}$$

The inductor requires a low DCR to achieve good efficiency, as well as enough room above peak inductor current before saturation.

## Output Capacitor Selection

The output capacitor selection is determined by output ripple and transient requirement. When operating in CCM, the output ripple has three components:

$$V_{\text{RIPPLE}} = V_{\text{RIPPLE}(C)} + V_{\text{RIPPLE}(ESR)} + V_{\text{RIPPLE}(ESL)} \quad (4)$$

$$V_{\text{RIPPLE}(C)} = \frac{I_{L(\text{ripple})}}{8 \times C_{\text{OUT}} \times f_{\text{SW}}} \quad (5)$$

$$V_{\text{RIPPLE}(ESR)} = I_{L(\text{ripple})} \times \text{ESR} \quad (6)$$

$$V_{\text{RIPPLE}(ESL)} = \frac{V_{\text{IN}} \times \text{ESL}}{L} \quad (7)$$

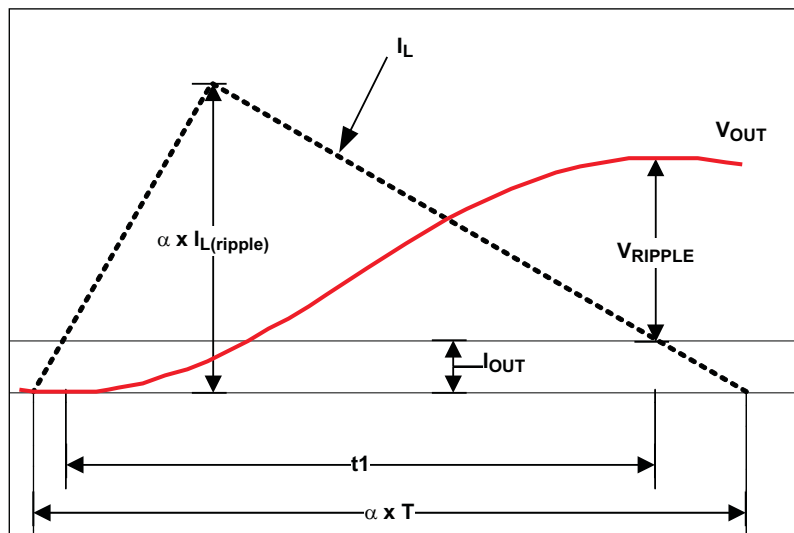
When a ceramic output capacitor is chosen, the ESL component is usually negligible. In the case when multiple output capacitors are used, the total ESR and ESL should be the equivalent of the all output capacitors in parallel.

When operating in DCM, the output ripple is dominated by the component determined by capacitance. It also varies with load current and can be expressed as shown in [Equation 8](#).

$$V_{\text{RIPPLE}(DCM)} = \frac{(\alpha \times I_{L(\text{ripple})} - I_{\text{OUT}})^2}{2 \times f_{\text{SW}} \times C_{\text{OUT}} \times I_{L(\text{ripple})}}$$

where

- $\alpha$  is the DCM On-Time coefficient and can be expressed as 
$$\alpha = \frac{t_{\text{ON}(dcm)}}{t_{\text{ON}(ccm)}} \quad (8)$$



UDG-11174

**Figure 6. DCM  $V_{\text{OUT}}$  Ripple Calculation**

## Input Capacitor Selection

The selection of input capacitor should be determined by the ripple current requirement. The ripple current generated by the converter needs to be absorbed by the input capacitors as well as the input source. The RMS ripple current from the converter can be expressed as:

$$I_{IN(\text{ripple})} = I_{OUT} \times \sqrt{D \times (1-D)}$$

where

- D is the duty cycle and can be expressed as  $D = \frac{V_{OUT}}{V_{IN}}$  (9)

To minimize the ripple current drawn from the input source, sufficient input decoupling capacitors should be placed close to the device. The ceramic capacitor is recommended due to the inherent low ESR and low ESL. The input voltage ripple can be calculated as below when the total input capacitance is determined:

$$V_{IN(\text{ripple})} = \frac{I_{OUT} \times D}{f_{SW} \times C_{IN}} \quad (10)$$

## Output Voltage Setting Resistors Selection

The output voltage is programmed by the voltage-divider resistor, R1 and R2 shown in [Figure 7](#). R1 is connected between FB pin and the output, and R2 is connected between the FB pin and FBG. The recommended value for R1 is between 1 kΩ and 5 kΩ. Determine R2 using [Equation 11](#).

$$R1 = \left( \frac{0.8}{(V_{OUT} - 0.8)} \right) \times R2 \quad (11)$$

## Compensation Design

The TPS53211 employs voltage mode control. To effectively compensate the power stage and ensure fast transient response, Type III compensation is typically used.

The control to output transfer function can be described in [Equation 12](#).

$$G_{CO} = 4 \times \frac{1 + s \times C_{OUT} \times ESR}{1 + s \times \left( \frac{L}{DCR + R_{LOAD}} + C_{OUT} \times (ESR + DCR) \right) + s^2 \times L \times C_{OUT}} \quad (12)$$

The output LC filter introduces a double pole, calculated in [Equation 13](#).

$$f_{DP} = \frac{1}{2 \times \pi \times \sqrt{L \times C_{OUT}}} \quad (13)$$

The ESR zero can be calculated in [Equation 14](#)

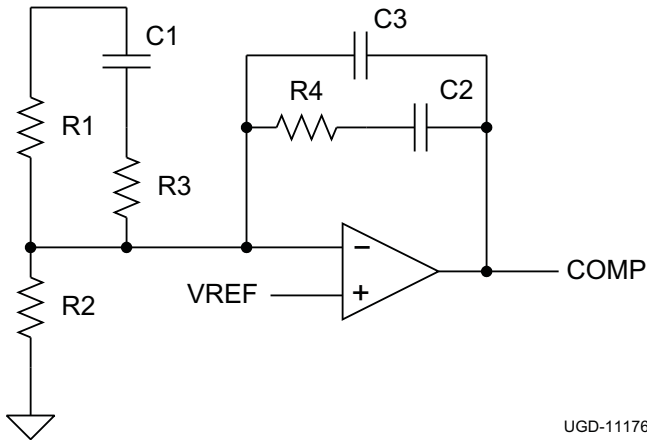
$$f_{ESR} = \frac{1}{2 \times \pi \times ESR \times C_{OUT}} \quad (14)$$

Figure 7 shows the configuration of Type III compensation and typical pole and zero locations. Equation 15 through Equation 17 describe the compensator transfer function and poles and zeros of the Type III network.

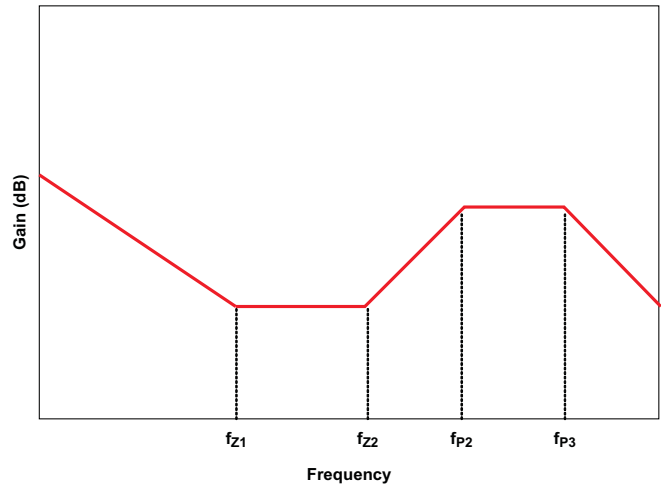
$$G_{EA} = \frac{(1 + s \times C_1 \times (R_1 + R_3))(1 + s \times R_4 \times C_2)}{(s \times R_1 \times (C_2 + C_3)) \times (1 + s \times C_1 \times R_3) \times \left(1 + s \times R_4 \times \frac{C_2 \times C_3}{C_2 + C_3}\right)} \quad (15)$$

$$f_{z1} = \frac{1}{2 \times \pi \times R_4 \times C_2} \quad (16)$$

$$f_{z2} = \frac{1}{2 \times \pi \times (R_1 + R_3) \times C_1} \cong \frac{1}{2 \times \pi \times R_1 \times C_1} \quad (17)$$



UGD-11176



UDG-11175

Figure 7. Type III Compensation Network Configuration

Figure 8. Type III Compensation Network Waveform

$$f_{p1} = 0 \quad (18)$$

$$f_{p2} = \frac{1}{2 \times \pi \times R_3 \times C_1} \quad (19)$$

$$f_{p3} = \frac{1}{2 \times \pi \times R_4 \times \left(\frac{C_2 \times C_3}{C_2 + C_3}\right)} \cong \frac{1}{2 \times \pi \times R_4 \times C_3} \quad (20)$$

The two zeros can be placed near the double pole frequency to cancel the response from the double pole. One pole can be used to cancel ESR zero, and the other non-zero pole can be placed at half switching frequency to attenuate the high frequency noise and switching ripple. Suitable values can be selected to achieve a compromise between high phase margin and fast response. A phase margin higher than 45° is required for stable operation.

**Changes from Original (September 2011) to Revision A**
**Page**

• Changed Input voltage range condition for CSP and CSN pins in ABSOLUTE MAXIMUM RATINGS table from " $V_{VCC} > 6.8$ " to " $V_{VCC} > 7.5$ " .....	2
• Changed Input voltage range maximum specification for CSP and CSN pins in ABSOLUTE MAXIMUM RATINGS table from "5.3 V" to "6 V" .....	2
• Changed Input voltage range condition for CSP and CSN pins in ABSOLUTE MAXIMUM RATINGS table from " $V_{VCC} \leq 6.8$ " to " $V_{VCC} \leq 7.5$ " .....	2
• Changed Input voltage range condition for CSP and CSN pins in RECOMMENDED OPERATING CONDITIONS table from " $V_{VCC} > 6.8$ " to " $V_{VCC} > 7.5$ " .....	3
• Changed Input voltage range maximum specification for CSP and CSN pins in RECOMMENDED OPERATING CONDITIONS table from "5 V" to "5.5 V" .....	3
• Changed Input voltage range condition for CSP and CSN pins in RECOMMENDED OPERATING CONDITIONS table from " $V_{VCC} > 6.8$ " to " $V_{VCC} > 7.5$ " .....	3

**PACKAGING INFORMATION**

Orderable Device	Status (1)	Package Type	Package Drawing	Pins	Package Qty	Eco Plan (2)	Lead/Ball Finish	MSL Peak Temp (3)	Op Temp (°C)	Top-Side Markings (4)	Samples
TPS53211RGTR	ACTIVE	QFN	RGT	16	3000	Green (RoHS & no Sb/Br)	CU NIPDAU	Level-2-260C-1 YEAR	-40 to 85	53211	<a href="#">Samples</a>
TPS53211RGTT	ACTIVE	QFN	RGT	16	250	Green (RoHS & no Sb/Br)	CU NIPDAU	Level-2-260C-1 YEAR	-40 to 85	53211	<a href="#">Samples</a>

(1) The marketing status values are defined as follows:

**ACTIVE:** Product device recommended for new designs.

**LIFEBUY:** TI has announced that the device will be discontinued, and a lifetime-buy period is in effect.

**NRND:** Not recommended for new designs. Device is in production to support existing customers, but TI does not recommend using this part in a new design.

**PREVIEW:** Device has been announced but is not in production. Samples may or may not be available.

**OBSOLETE:** TI has discontinued the production of the device.

(2) Eco Plan - The planned eco-friendly classification: Pb-Free (RoHS), Pb-Free (RoHS Exempt), or Green (RoHS & no Sb/Br) - please check <http://www.ti.com/productcontent> for the latest availability information and additional product content details.

**TBD:** The Pb-Free/Green conversion plan has not been defined.

**Pb-Free (RoHS):** TI's terms "Lead-Free" or "Pb-Free" mean semiconductor products that are compatible with the current RoHS requirements for all 6 substances, including the requirement that lead not exceed 0.1% by weight in homogeneous materials. Where designed to be soldered at high temperatures, TI Pb-Free products are suitable for use in specified lead-free processes.

**Pb-Free (RoHS Exempt):** This component has a RoHS exemption for either 1) lead-based flip-chip solder bumps used between the die and package, or 2) lead-based die adhesive used between the die and leadframe. The component is otherwise considered Pb-Free (RoHS compatible) as defined above.

**Green (RoHS & no Sb/Br):** TI defines "Green" to mean Pb-Free (RoHS compatible), and free of Bromine (Br) and Antimony (Sb) based flame retardants (Br or Sb do not exceed 0.1% by weight in homogeneous material)

(3) MSL, Peak Temp. -- The Moisture Sensitivity Level rating according to the JEDEC industry standard classifications, and peak solder temperature.

(4) Multiple Top-Side Markings will be inside parentheses. Only one Top-Side Marking contained in parentheses and separated by a "~" will appear on a device. If a line is indented then it is a continuation of the previous line and the two combined represent the entire Top-Side Marking for that device.

**Important Information and Disclaimer:** The information provided on this page represents TI's knowledge and belief as of the date that it is provided. TI bases its knowledge and belief on information provided by third parties, and makes no representation or warranty as to the accuracy of such information. Efforts are underway to better integrate information from third parties. TI has taken and continues to take reasonable steps to provide representative and accurate information but may not have conducted destructive testing or chemical analysis on incoming materials and chemicals. TI and TI suppliers consider certain information to be proprietary, and thus CAS numbers and other limited information may not be available for release.

In no event shall TI's liability arising out of such information exceed the total purchase price of the TI part(s) at issue in this document sold by TI to Customer on an annual basis.

**TAPE AND REEL INFORMATION**

**QUADRANT ASSIGNMENTS FOR PIN 1 ORIENTATION IN TAPE**


\*All dimensions are nominal

Device	Package Type	Package Drawing	Pins	SPQ	Reel Diameter (mm)	Reel Width W1 (mm)	A0 (mm)	B0 (mm)	K0 (mm)	P1 (mm)	W (mm)	Pin1 Quadrant
TPS53211RGTR	QFN	RGT	16	3000	330.0	12.4	3.3	3.3	1.1	8.0	12.0	Q2
TPS53211RGTT	QFN	RGT	16	250	180.0	12.4	3.3	3.3	1.1	8.0	12.0	Q2

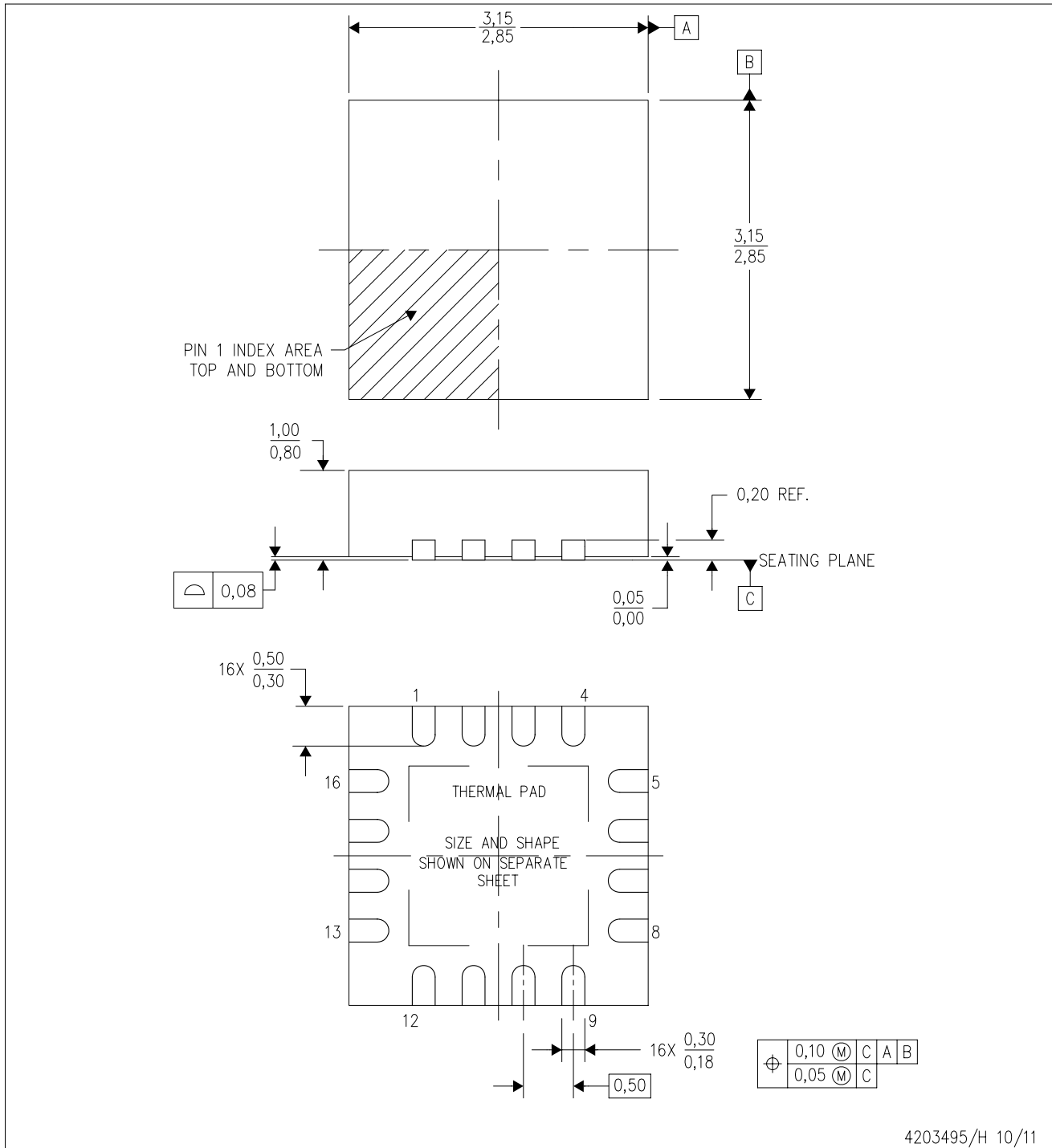
**TAPE AND REEL BOX DIMENSIONS**


\*All dimensions are nominal

Device	Package Type	Package Drawing	Pins	SPQ	Length (mm)	Width (mm)	Height (mm)
TPS53211RGTR	QFN	RGT	16	3000	367.0	367.0	35.0
TPS53211RGTT	QFN	RGT	16	250	210.0	185.0	35.0

RGT (S-PVQFN-N16)

PLASTIC QUAD FLATPACK NO-LEAD



4203495/H 10/11

- NOTES:
- All linear dimensions are in millimeters. Dimensioning and tolerancing per ASME Y14.5M-1994.
  - This drawing is subject to change without notice.
  - Quad Flatpack, No-leads (QFN) package configuration.
  - The package thermal pad must be soldered to the board for thermal and mechanical performance.
  - See the additional figure in the Product Data Sheet for details regarding the exposed thermal pad features and dimensions.
  - Falls within JEDEC MO-220.

# THERMAL PAD MECHANICAL DATA

RGT (S-PVQFN-N16)

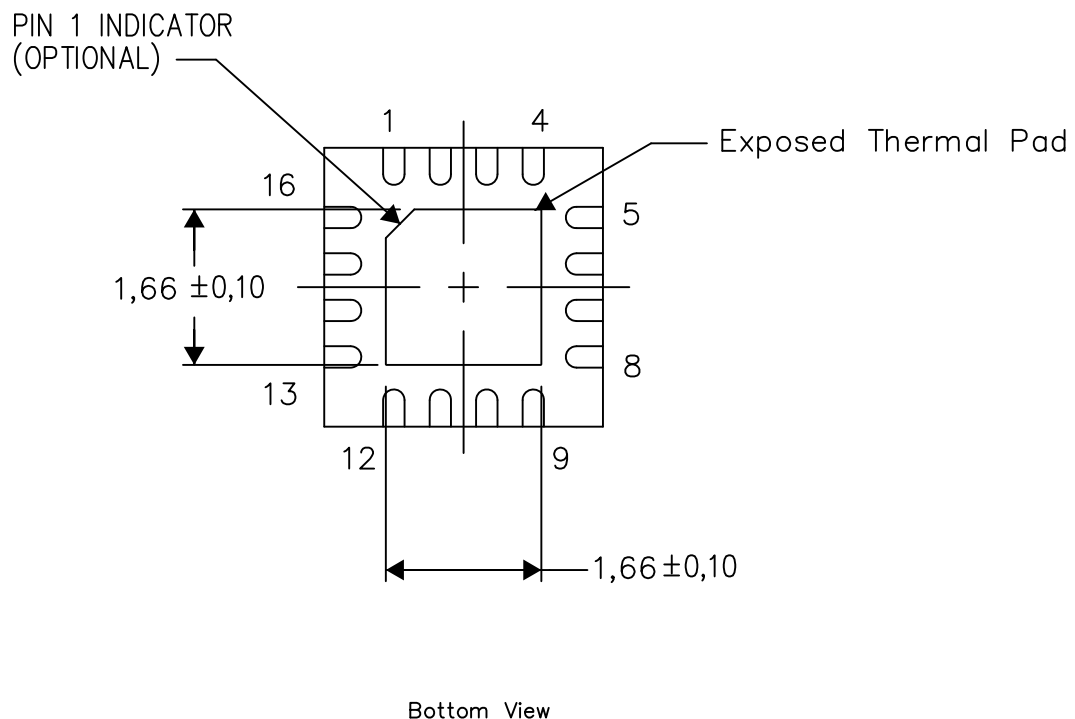
PLASTIC QUAD FLATPACK NO-LEAD

## THERMAL INFORMATION

This package incorporates an exposed thermal pad that is designed to be attached directly to an external heatsink. The thermal pad must be soldered directly to the printed circuit board (PCB). After soldering, the PCB can be used as a heatsink. In addition, through the use of thermal vias, the thermal pad can be attached directly to the appropriate copper plane shown in the electrical schematic for the device, or alternatively, can be attached to a special heatsink structure designed into the PCB. This design optimizes the heat transfer from the integrated circuit (IC).

For information on the Quad Flatpack No-Lead (QFN) package and its advantages, refer to Application Report, QFN/SON PCB Attachment, Texas Instruments Literature No. SLUA271. This document is available at [www.ti.com](http://www.ti.com).

The exposed thermal pad dimensions for this package are shown in the following illustration.



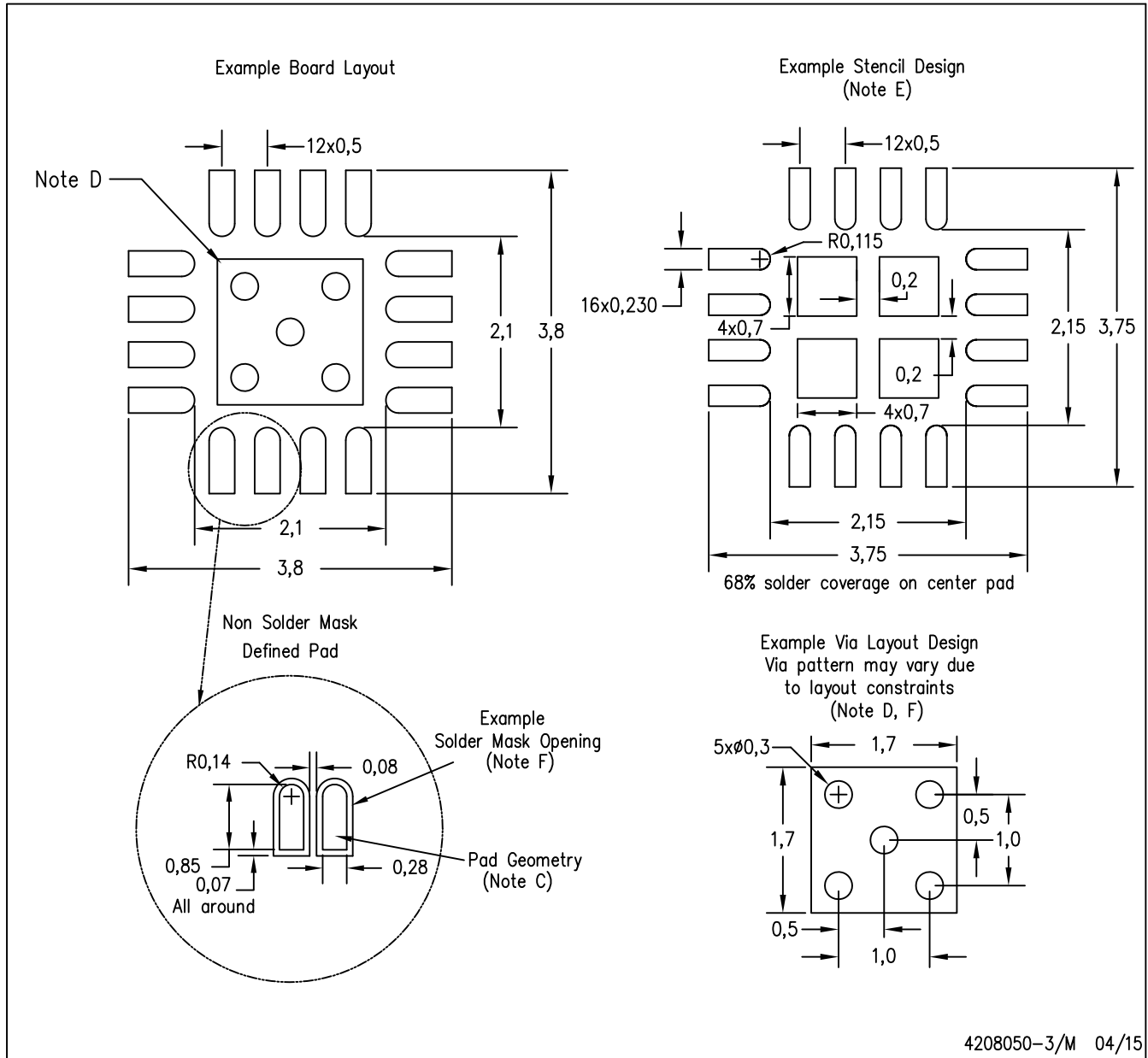
Exposed Thermal Pad Dimensions

4206349-10/Z 08/15

NOTE: All linear dimensions are in millimeters

RGT (S-PVQFN-N16)

PLASTIC QUAD FLATPACK NO-LEAD



- NOTES:
- A. All linear dimensions are in millimeters.
  - B. This drawing is subject to change without notice.
  - C. Publication IPC-7351 is recommended for alternate designs.
  - D. This package is designed to be soldered to a thermal pad on the board. Refer to Application Note, QFN/SON PCB Attachment, Texas Instruments Literature No. SLUA271, and also the Product Data Sheets for specific thermal information, via requirements, and recommended board layout. These documents are available at [www.ti.com](http://www.ti.com) <<http://www.ti.com>>.
  - E. Laser cutting apertures with trapezoidal walls and also rounding corners will offer better paste release. Customers should contact their board assembly site for stencil design recommendations. Refer to IPC 7525 for stencil design considerations.
  - F. Customers should contact their board fabrication site for minimum solder mask web tolerances between signal pads.

## IMPORTANT NOTICE

Texas Instruments Incorporated and its subsidiaries (TI) reserve the right to make corrections, enhancements, improvements and other changes to its semiconductor products and services per JESD46, latest issue, and to discontinue any product or service per JESD48, latest issue. Buyers should obtain the latest relevant information before placing orders and should verify that such information is current and complete. All semiconductor products (also referred to herein as "components") are sold subject to TI's terms and conditions of sale supplied at the time of order acknowledgment.

TI warrants performance of its components to the specifications applicable at the time of sale, in accordance with the warranty in TI's terms and conditions of sale of semiconductor products. Testing and other quality control techniques are used to the extent TI deems necessary to support this warranty. Except where mandated by applicable law, testing of all parameters of each component is not necessarily performed.

TI assumes no liability for applications assistance or the design of Buyers' products. Buyers are responsible for their products and applications using TI components. To minimize the risks associated with Buyers' products and applications, Buyers should provide adequate design and operating safeguards.

TI does not warrant or represent that any license, either express or implied, is granted under any patent right, copyright, mask work right, or other intellectual property right relating to any combination, machine, or process in which TI components or services are used. Information published by TI regarding third-party products or services does not constitute a license to use such products or services or a warranty or endorsement thereof. Use of such information may require a license from a third party under the patents or other intellectual property of the third party, or a license from TI under the patents or other intellectual property of TI.

Reproduction of significant portions of TI information in TI data books or data sheets is permissible only if reproduction is without alteration and is accompanied by all associated warranties, conditions, limitations, and notices. TI is not responsible or liable for such altered documentation. Information of third parties may be subject to additional restrictions.

Resale of TI components or services with statements different from or beyond the parameters stated by TI for that component or service voids all express and any implied warranties for the associated TI component or service and is an unfair and deceptive business practice. TI is not responsible or liable for any such statements.

Buyer acknowledges and agrees that it is solely responsible for compliance with all legal, regulatory and safety-related requirements concerning its products, and any use of TI components in its applications, notwithstanding any applications-related information or support that may be provided by TI. Buyer represents and agrees that it has all the necessary expertise to create and implement safeguards which anticipate dangerous consequences of failures, monitor failures and their consequences, lessen the likelihood of failures that might cause harm and take appropriate remedial actions. Buyer will fully indemnify TI and its representatives against any damages arising out of the use of any TI components in safety-critical applications.

In some cases, TI components may be promoted specifically to facilitate safety-related applications. With such components, TI's goal is to help enable customers to design and create their own end-product solutions that meet applicable functional safety standards and requirements. Nonetheless, such components are subject to these terms.

No TI components are authorized for use in FDA Class III (or similar life-critical medical equipment) unless authorized officers of the parties have executed a special agreement specifically governing such use.

Only those TI components which TI has specifically designated as military grade or "enhanced plastic" are designed and intended for use in military/aerospace applications or environments. Buyer acknowledges and agrees that any military or aerospace use of TI components which have **not** been so designated is solely at the Buyer's risk, and that Buyer is solely responsible for compliance with all legal and regulatory requirements in connection with such use.

TI has specifically designated certain components as meeting ISO/TS16949 requirements, mainly for automotive use. In any case of use of non-designated products, TI will not be responsible for any failure to meet ISO/TS16949.

### Products

Audio	<a href="http://www.ti.com/audio">www.ti.com/audio</a>
Amplifiers	<a href="http://amplifier.ti.com">amplifier.ti.com</a>
Data Converters	<a href="http://dataconverter.ti.com">dataconverter.ti.com</a>
DLP® Products	<a href="http://www.dlp.com">www.dlp.com</a>
DSP	<a href="http://dsp.ti.com">dsp.ti.com</a>
Clocks and Timers	<a href="http://www.ti.com/clocks">www.ti.com/clocks</a>
Interface	<a href="http://interface.ti.com">interface.ti.com</a>
Logic	<a href="http://logic.ti.com">logic.ti.com</a>
Power Mgmt	<a href="http://power.ti.com">power.ti.com</a>
Microcontrollers	<a href="http://microcontroller.ti.com">microcontroller.ti.com</a>
RFID	<a href="http://www.ti-rfid.com">www.ti-rfid.com</a>
OMAP Applications Processors	<a href="http://www.ti.com/omap">www.ti.com/omap</a>
Wireless Connectivity	<a href="http://www.ti.com/wirelessconnectivity">www.ti.com/wirelessconnectivity</a>

### Applications

Automotive and Transportation	<a href="http://www.ti.com/automotive">www.ti.com/automotive</a>
Communications and Telecom	<a href="http://www.ti.com/communications">www.ti.com/communications</a>
Computers and Peripherals	<a href="http://www.ti.com/computers">www.ti.com/computers</a>
Consumer Electronics	<a href="http://www.ti.com/consumer-apps">www.ti.com/consumer-apps</a>
Energy and Lighting	<a href="http://www.ti.com/energy">www.ti.com/energy</a>
Industrial	<a href="http://www.ti.com/industrial">www.ti.com/industrial</a>
Medical	<a href="http://www.ti.com/medical">www.ti.com/medical</a>
Security	<a href="http://www.ti.com/security">www.ti.com/security</a>
Space, Avionics and Defense	<a href="http://www.ti.com/space-avionics-defense">www.ti.com/space-avionics-defense</a>
Video and Imaging	<a href="http://www.ti.com/video">www.ti.com/video</a>

### TI E2E Community

[e2e.ti.com](http://e2e.ti.com)